



Núcleo de Inteligência Competitiva

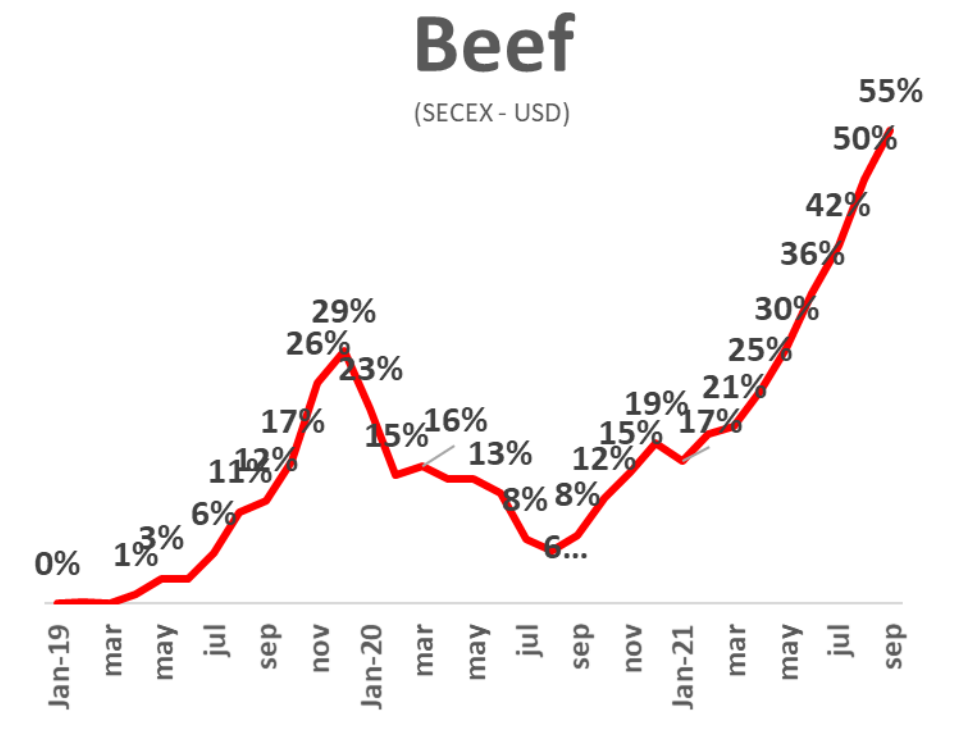
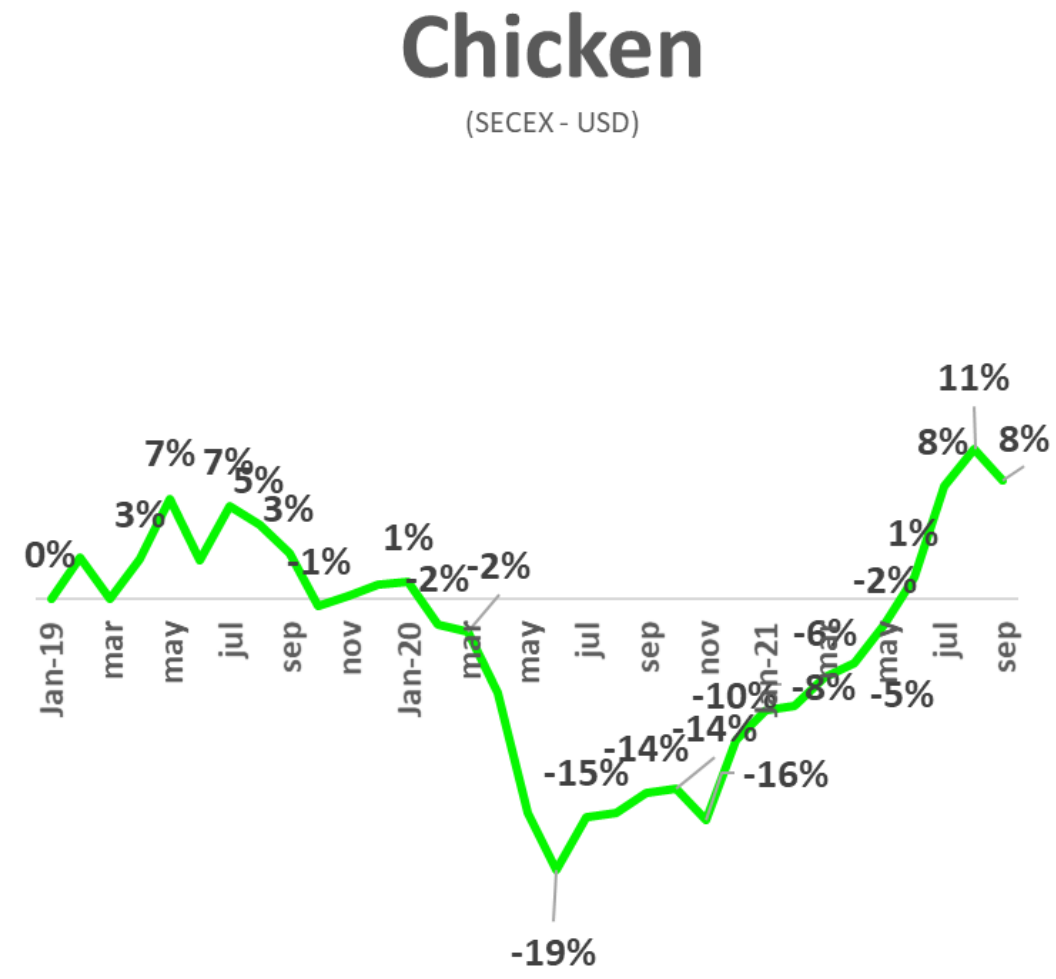
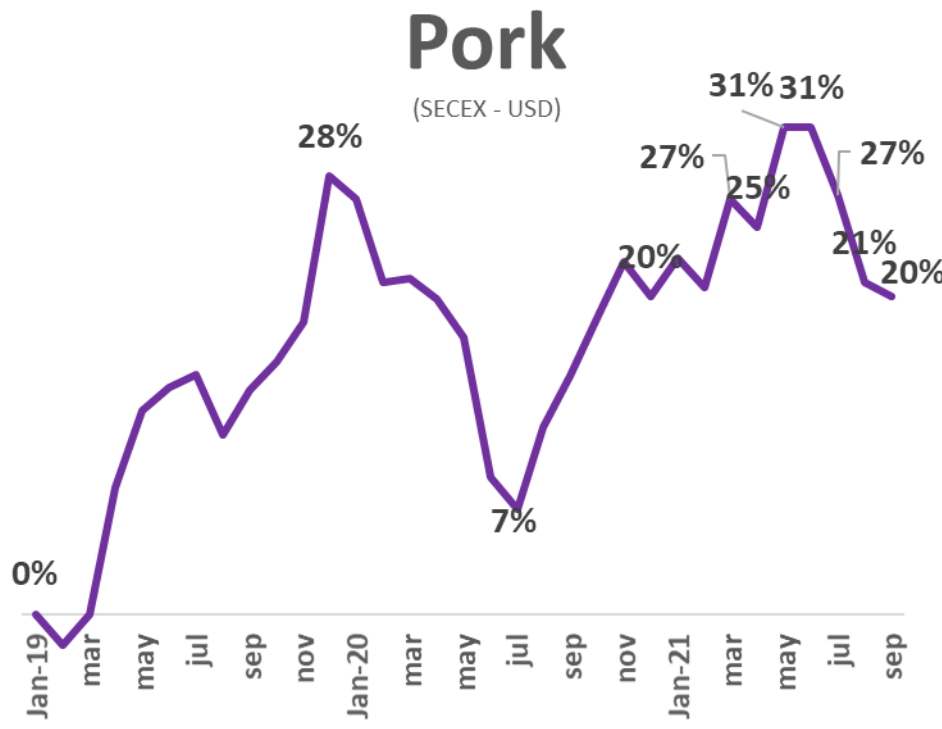
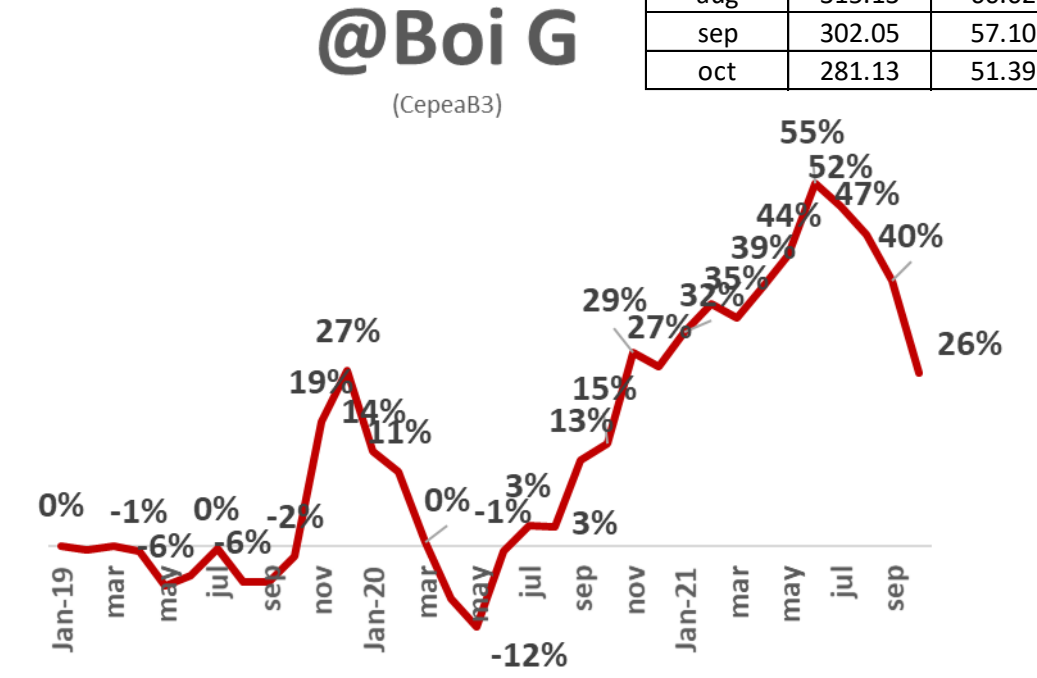
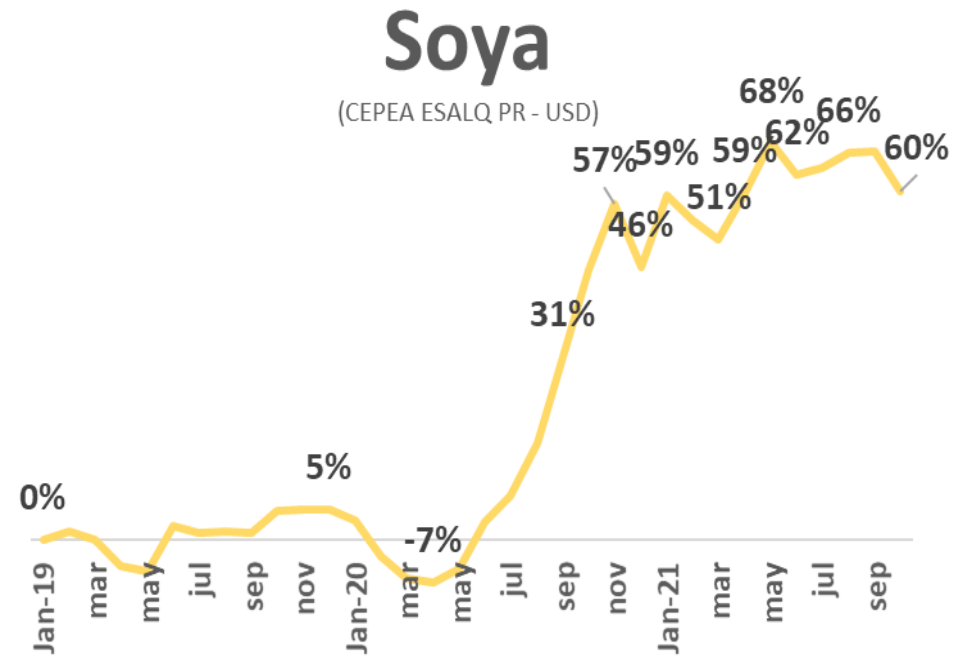
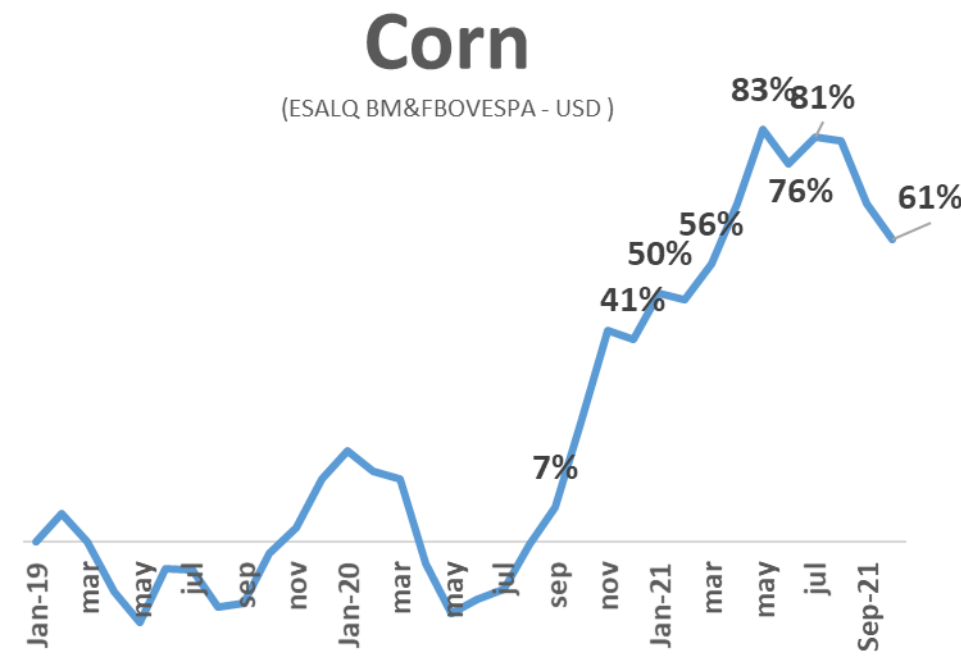
Carne Suína

DASHBOARD

Outubro
2021

EVOLUÇÃO DOS PREÇOS: GRÃOS vs. EXPORTAÇÃO

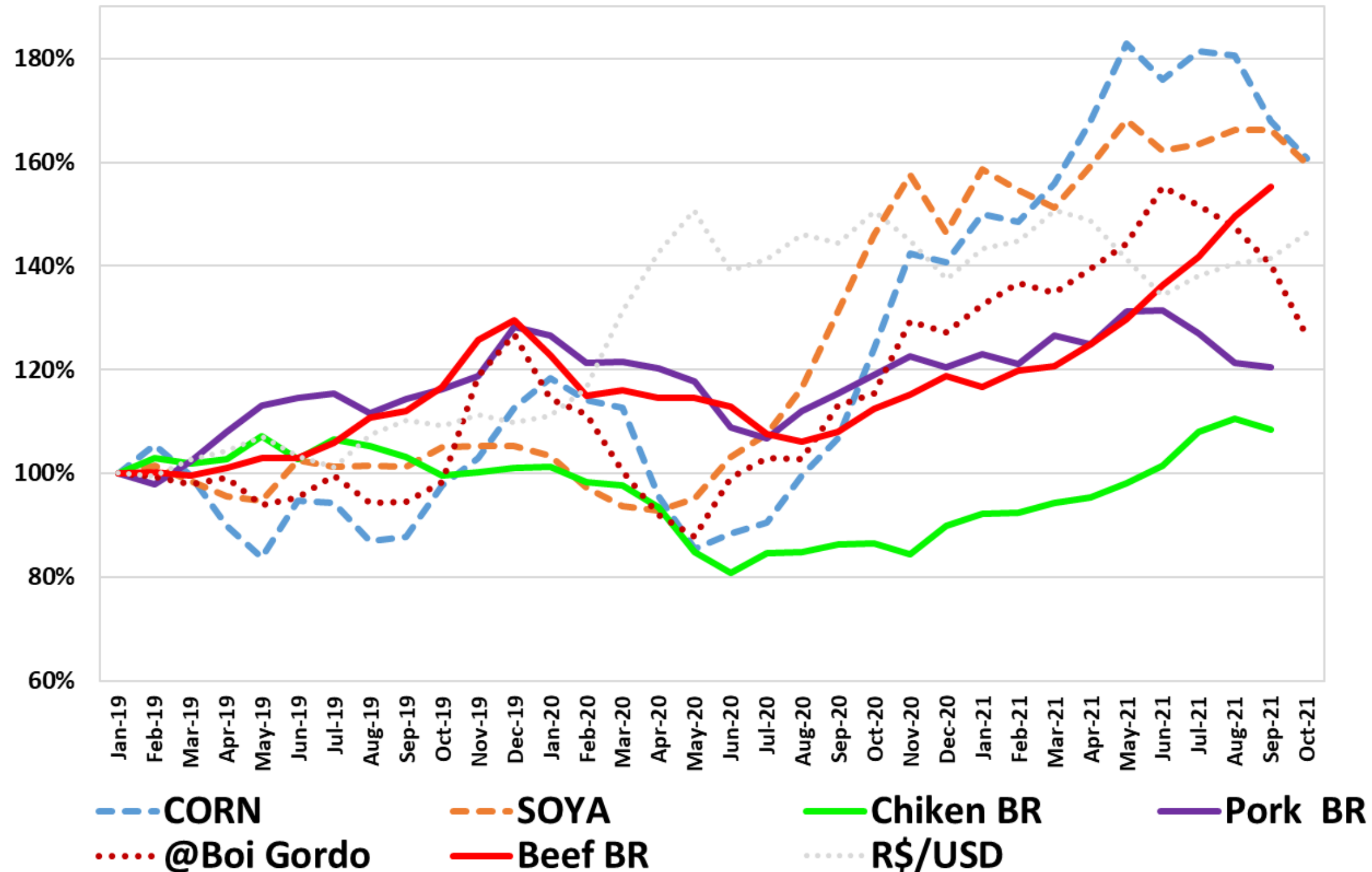
@Boi G	R\$/@	USD/mt	Index
jun	317.28	63.20	55%
jul	318.63	61.75	52%
aug	315.13	60.02	47%
sep	302.05	57.10	40%
oct	281.13	51.39	26%



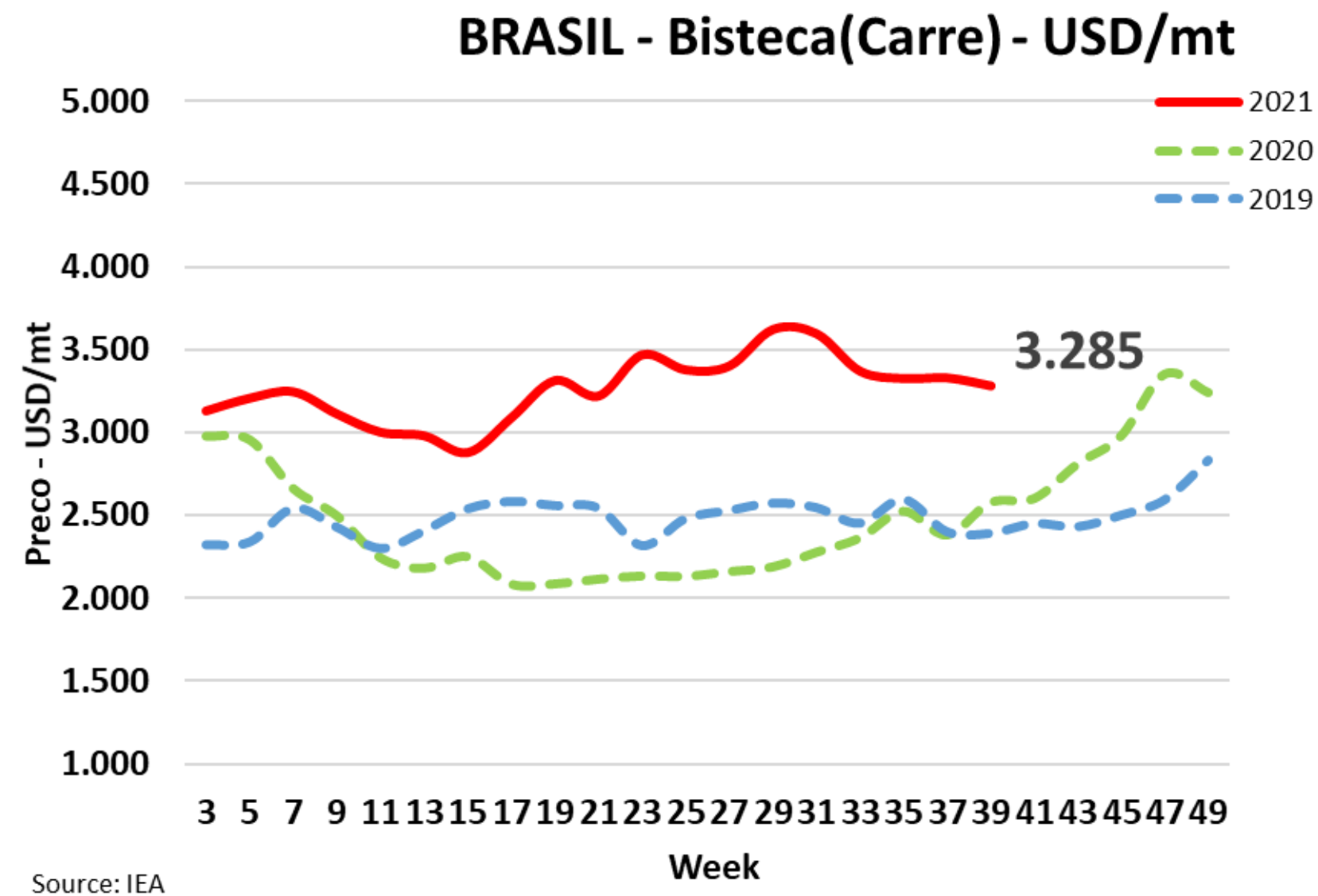
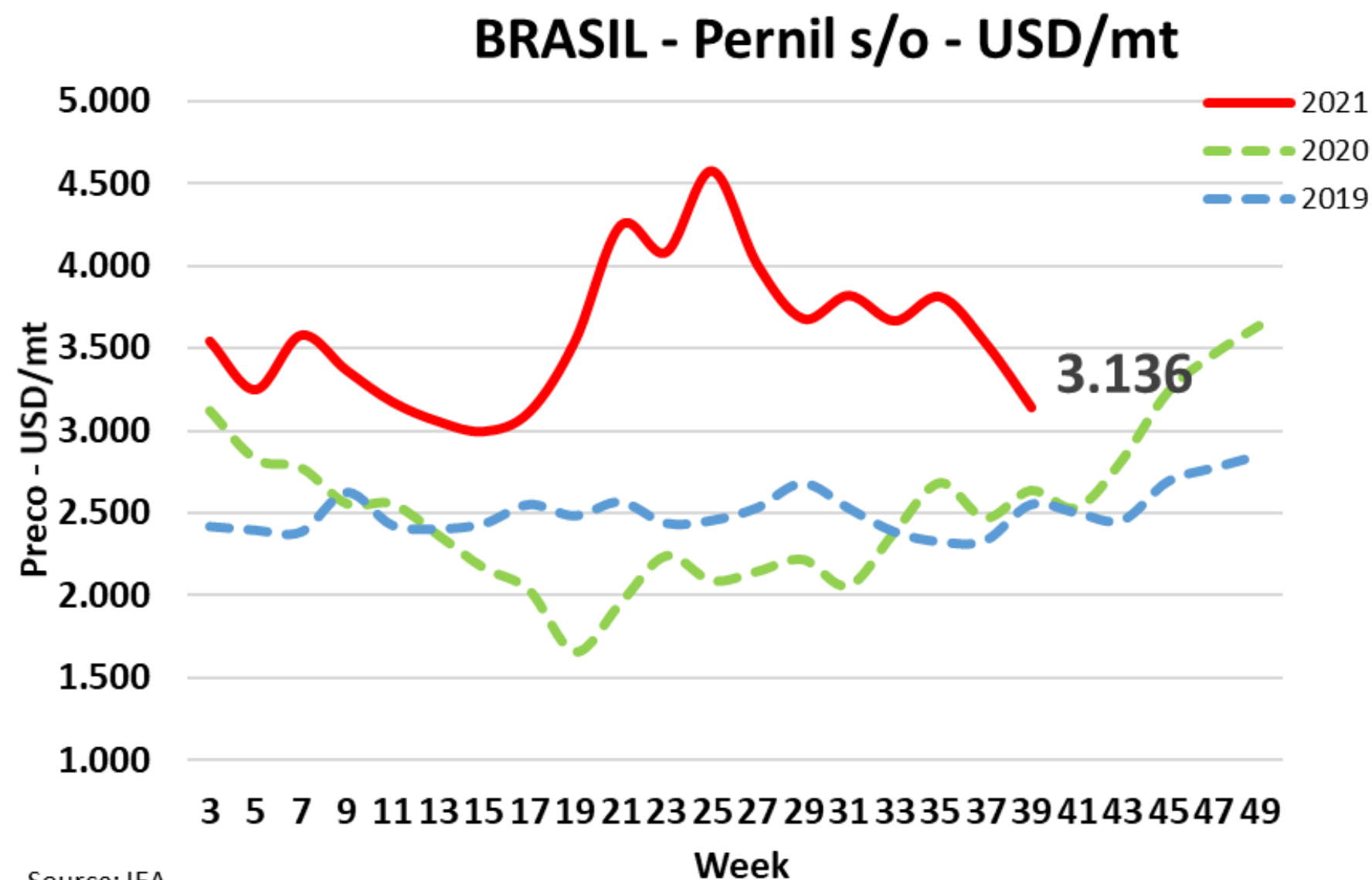
CENARIO CUSTOS

Apesar do aumento dos custos o Frango foi a proteína que mais demorou em se adequar a esta nova realidade

Evolution of Grain Prices and Export Mix (USD - Base - ESALQ Secex)



Preço IEA Pernil s/o suíno em SP





ASSOCIAÇÃO
BRASILEIRA
DE PROTEÍNA
ANIMAL

<http://abpa-br.com.br/>

abpa@abpa-br.org

Siga a ABPA nas redes sociais!



[instagram.com/abpabr](https://www.instagram.com/abpabr)



twitter.com/abpabr



[fb.com/abpabr](https://www.facebook.com/abpabr)



[linkedin.com/company/abpa](https://www.linkedin.com/company/abpa)