



# Núcleo de Inteligência Competitiva

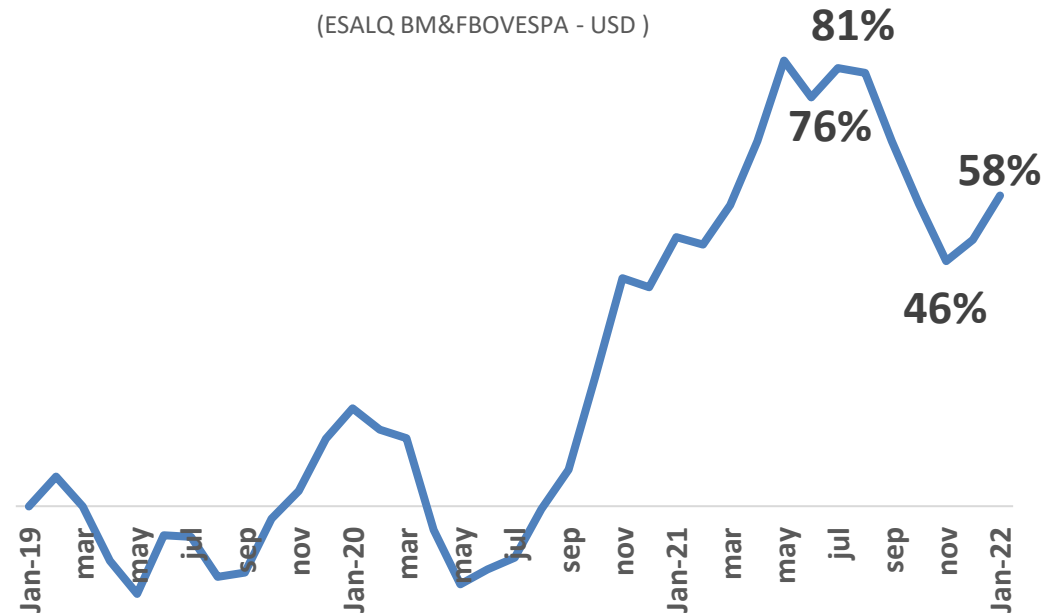
## Carne Suína

Janeiro  
2022

# EVOLUÇÃO DOS PREÇOS: GRÃOS vs. EXPORTAÇÃO

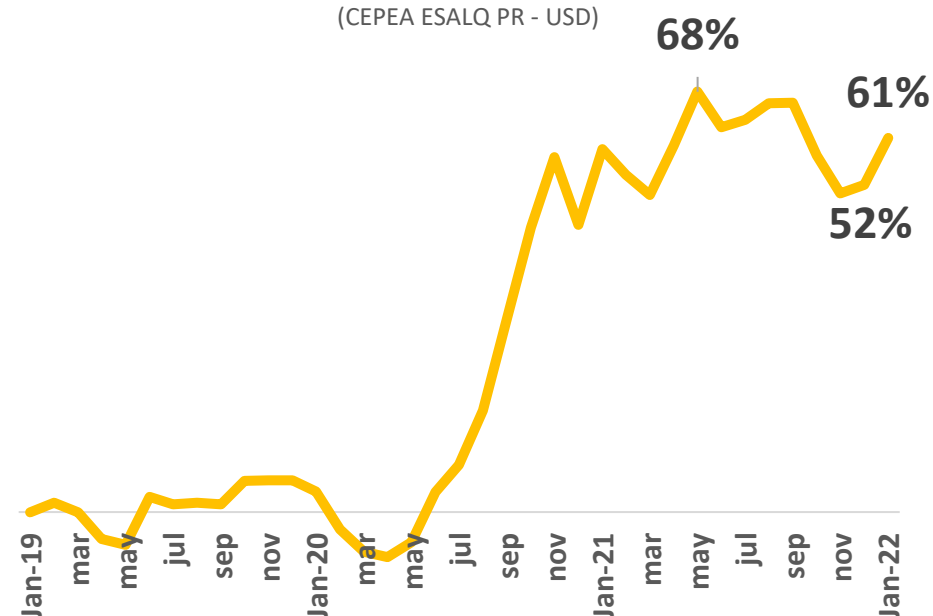
## Corn

(ESALQ BM&FBOVESPA - USD)



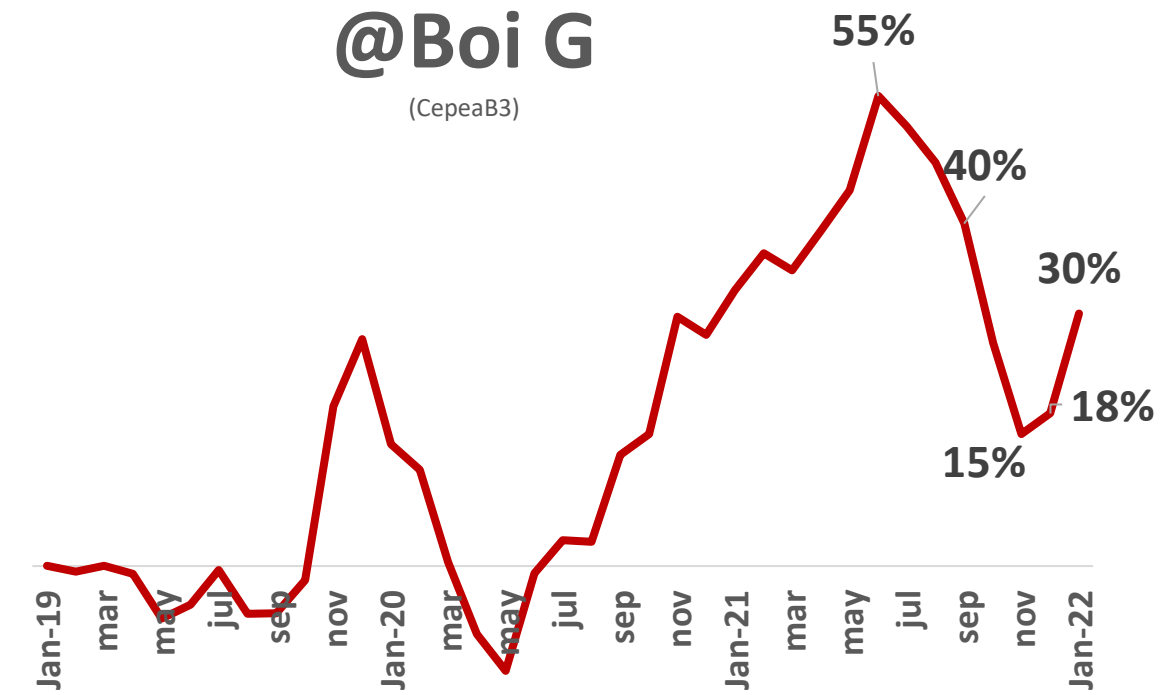
## Soya

(CEPEA ESALQ PR - USD)



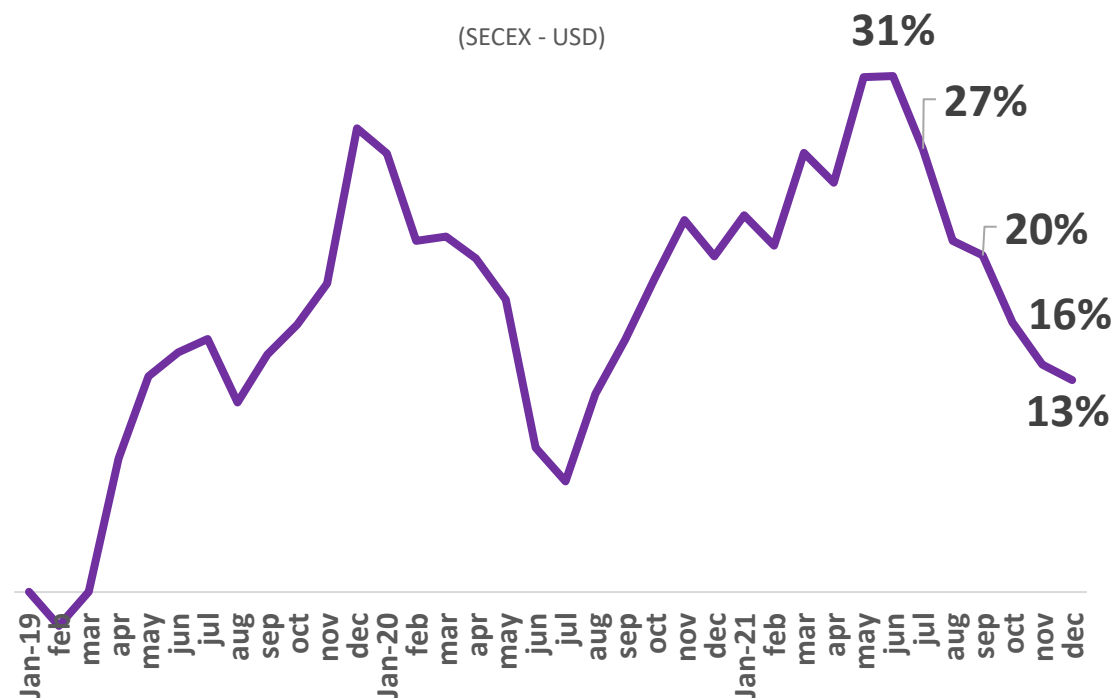
## @Boi G

(CepeaB3)



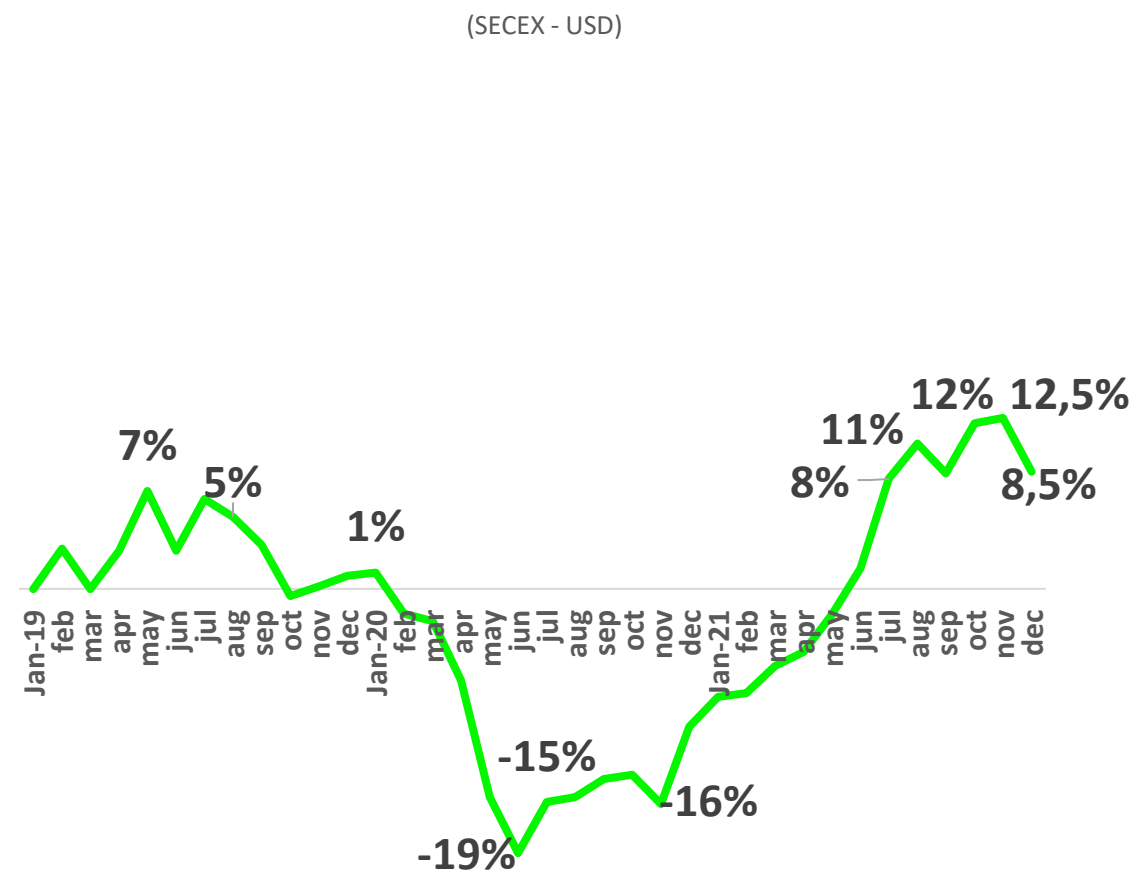
## Pork

(SECEX - USD)



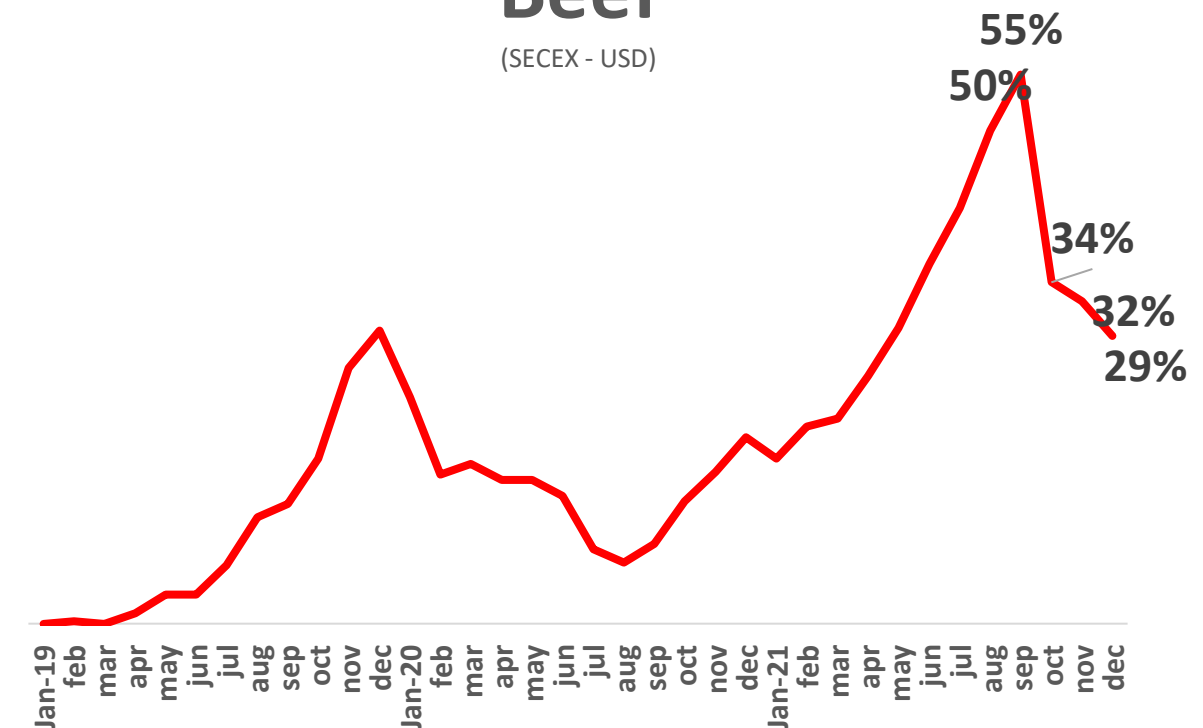
## Chicken

(SECEX - USD)



## Beef

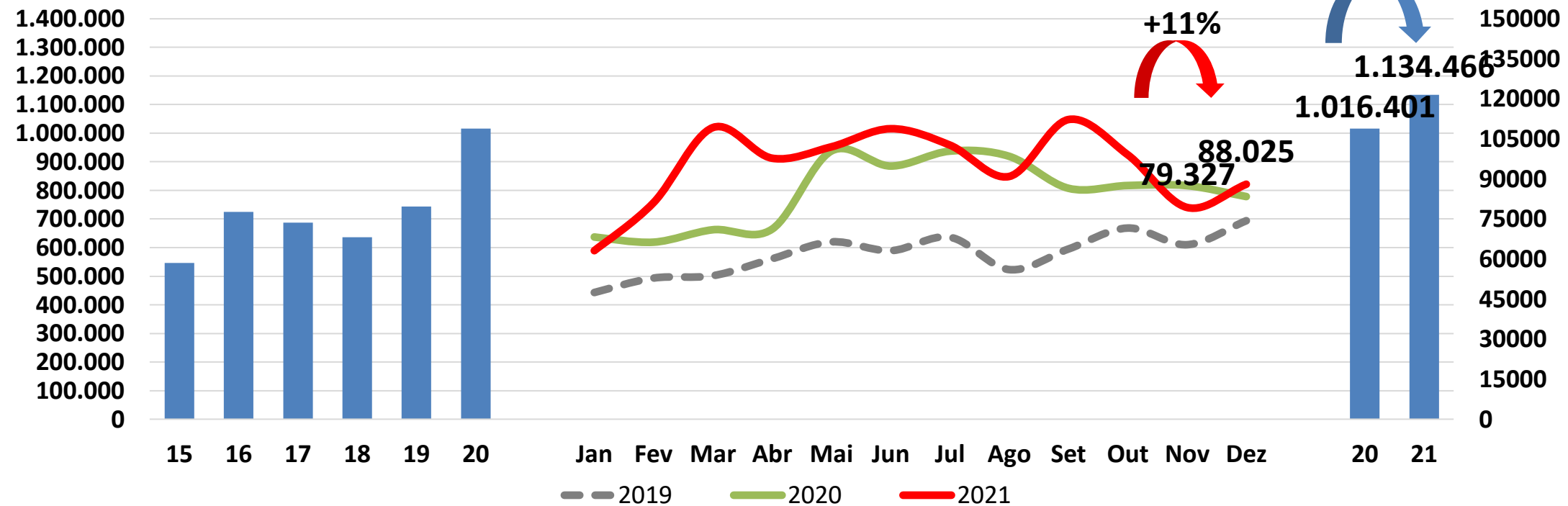
(SECEX - USD)



# EXPORTAÇÕES BRASILEIRAS DE CARNE SUÍNA

# EXPORTAÇÃO BRASILEIRA DE CARNE SUÍNA

Brasil – Suíno Total – Volume – mt

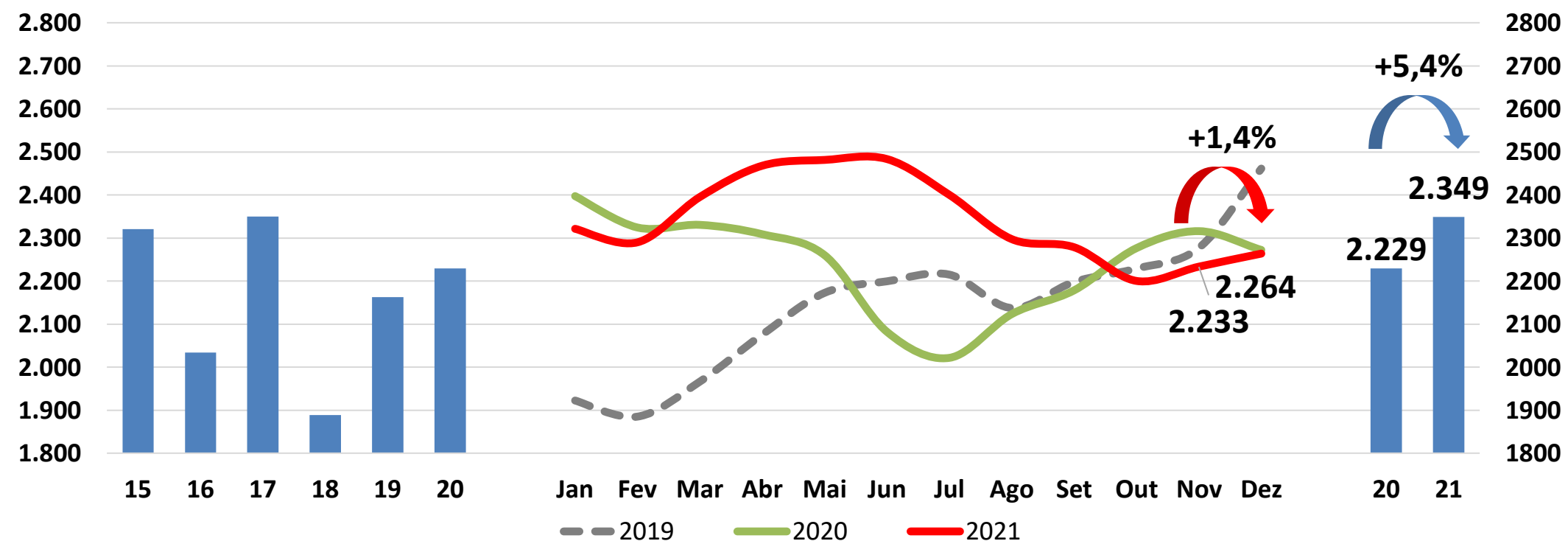


**Volume:**

Aumento de 8.698mt, cerca de 21% em relação a nov/21.

No acumulado de jan-dez/21, houve aumento de 118.064mt, cerca de 12% acima do mesmo período de 2020.

Brasil – Suíno Total – Preço – USD/mt – FOB

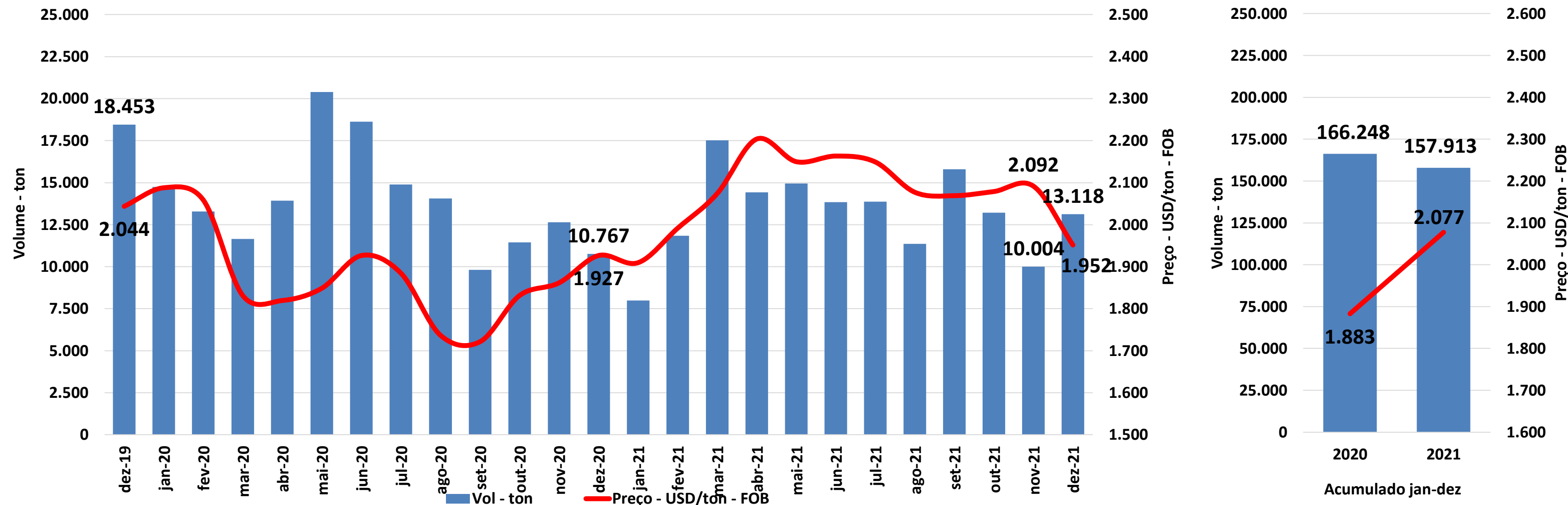


**Preço:**

Em dez/21 o preço volta a subir USD 30/mt, cerca de 1,4% acima de nov/21.

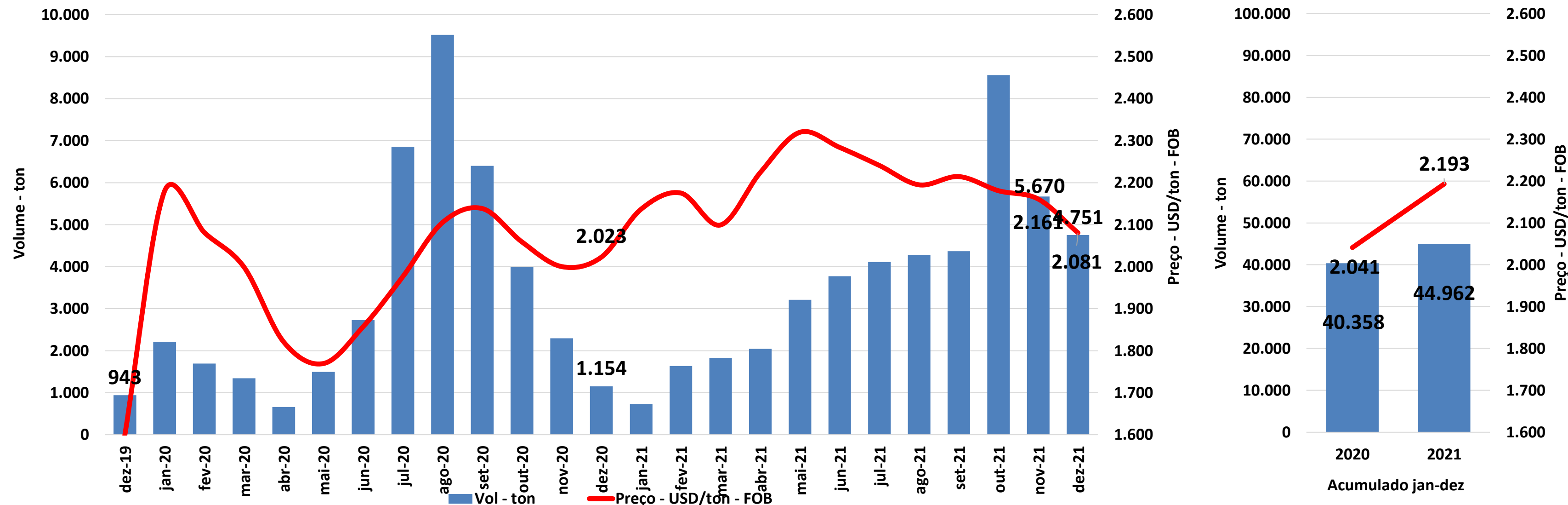
No acumulado de jan-dez/21, houve aumento de USD 120/mt, cerca de 5,4% acima do mesmo período de 2020.

# HONG KONG



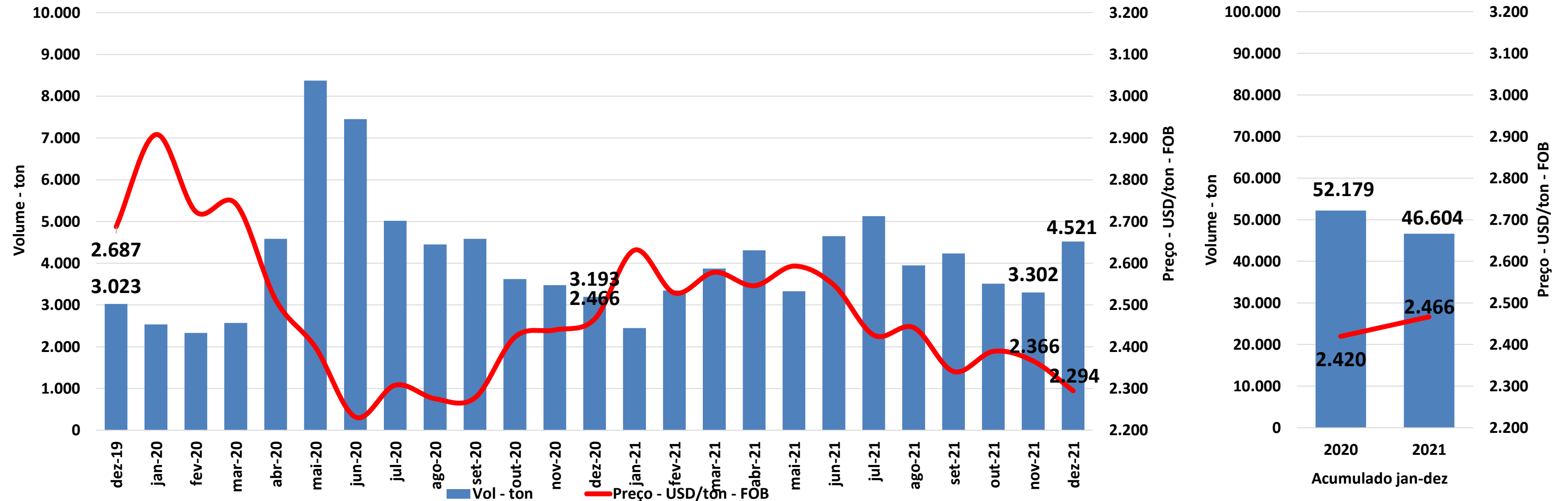
Quadro Comparativo	Volume		Preço		Receita	
	ton	%	USD/ton	%	USD	%
dez-21 x nov-21	↑ 3.114	31,1%	↓ -140	-6,7%	↑ 4.260	20,0%
dez-21 x dez-20	↑ 2.351	21,8%	↑ 25	1,3%	↑ 4.858	23,4%
jan-dez/21 x jan-dez/20	↓ -8.335	-5,0%	↑ 194	10,3%	↑ 14.973	4,8%

# VIETNÃ



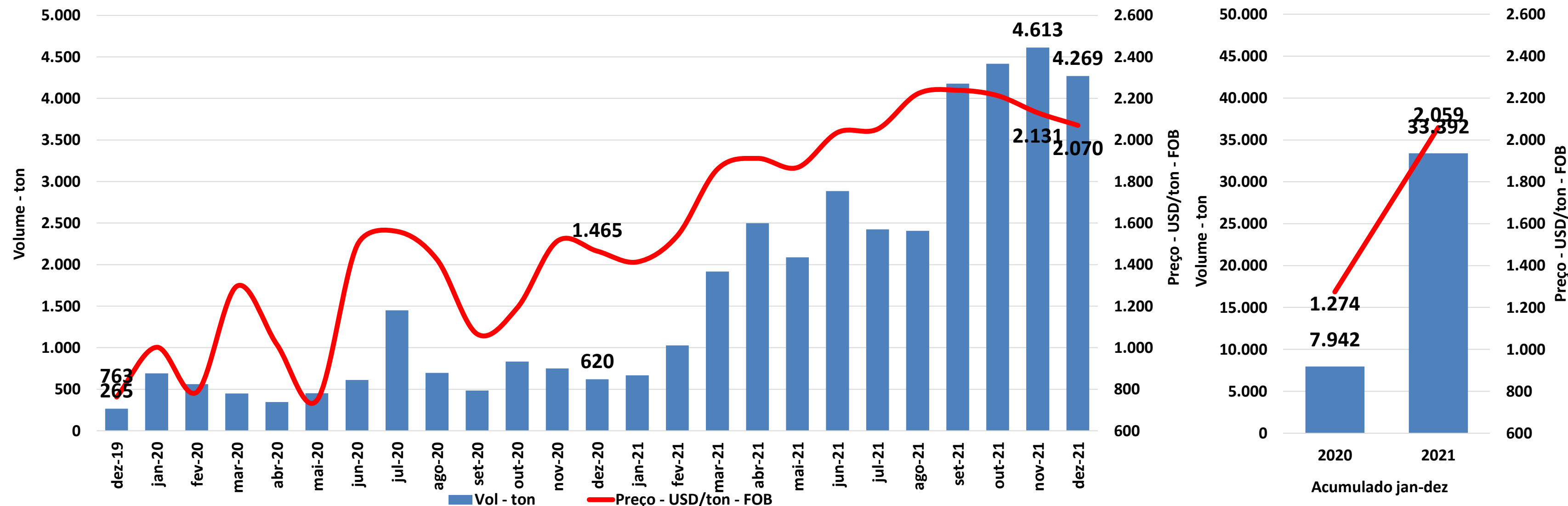
Quadro Comparativo	Volume		Preço		Receita	
	ton	%	USD/ton	%	USD	%
dez-21 x nov-21	↓ -919	-16,2%	↓ -80	-3,7%	↓ -2.367	-19,3%
dez-21 x dez-20	↑ 3.597	311,6%	↑ 58	2,9%	↑ 7.551	323,4%
jan-dez/21 x jan-dez/20	↑ 4.604	11,4%	↑ 152	7,4%	↑ 16.217	19,7%

# CINGAPURA



Quadro Comparativo	Volume		Preço		Receita	
	ton	%	USD/ton	%	USD	%
dez-21 x nov-21	↑ 1.219	36,9%	↓ -71	-3,0%	↑ 2.561	32,8%
dez-21 x dez-20	↑ 1.328	41,6%	↓ -172	-7,0%	↑ 2.496	31,7%
jan-dez/21 x jan-dez/20	↓ -5.575	-10,7%	↑ 47	1,9%	↓ -11.317	-9,0%

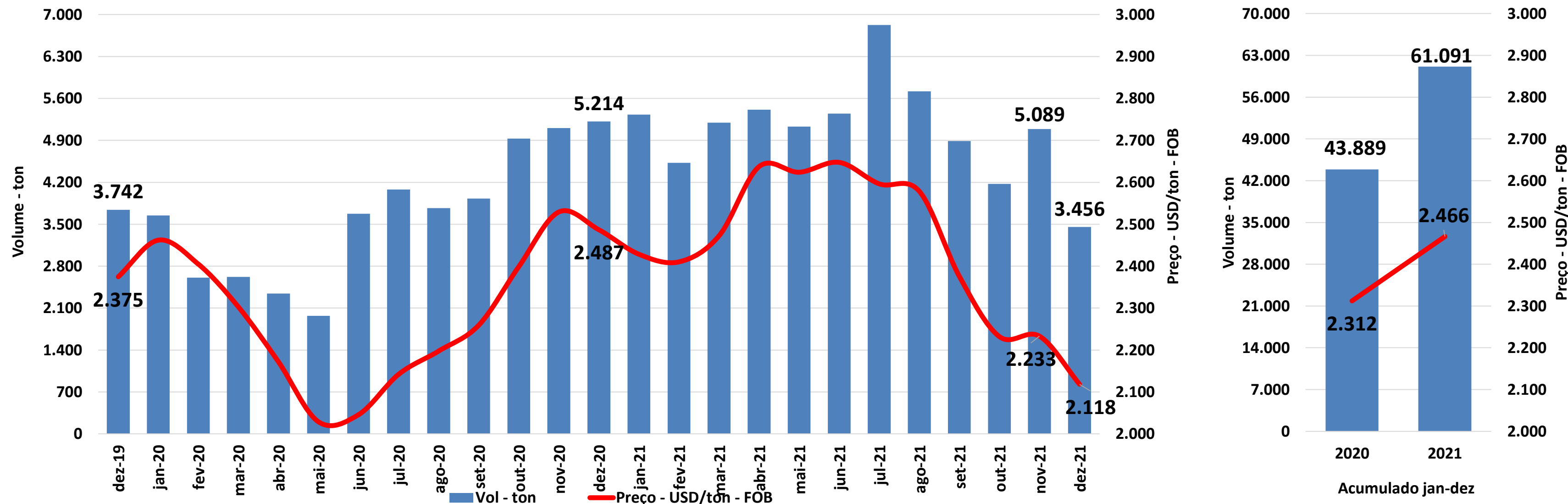
# FILIPINAS



Quadro Comparativo	Volume		Preço		Receita	
	ton	%	USD/ton	%	USD	%
dez-21 x nov-21	↓ -344	-7,5%	↓ -60	-2,8%	↓ -990	-10,1%
dez-21 x dez-20	↑ 3.649	588,6%	↑ 605	41,3%	↑ 7.931	873,2%
jan-dez/21 x jan-dez/20	↑ 25.450	320,4%	↑ 785	61,6%	↑ 58.647	579,4%

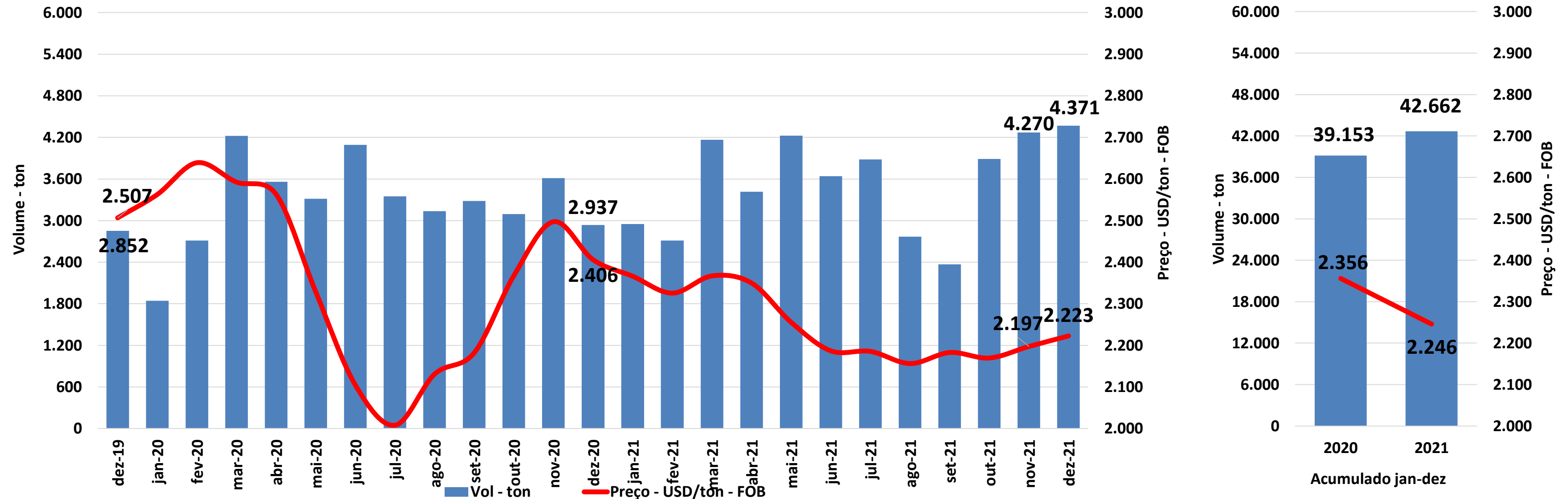


# CHILE



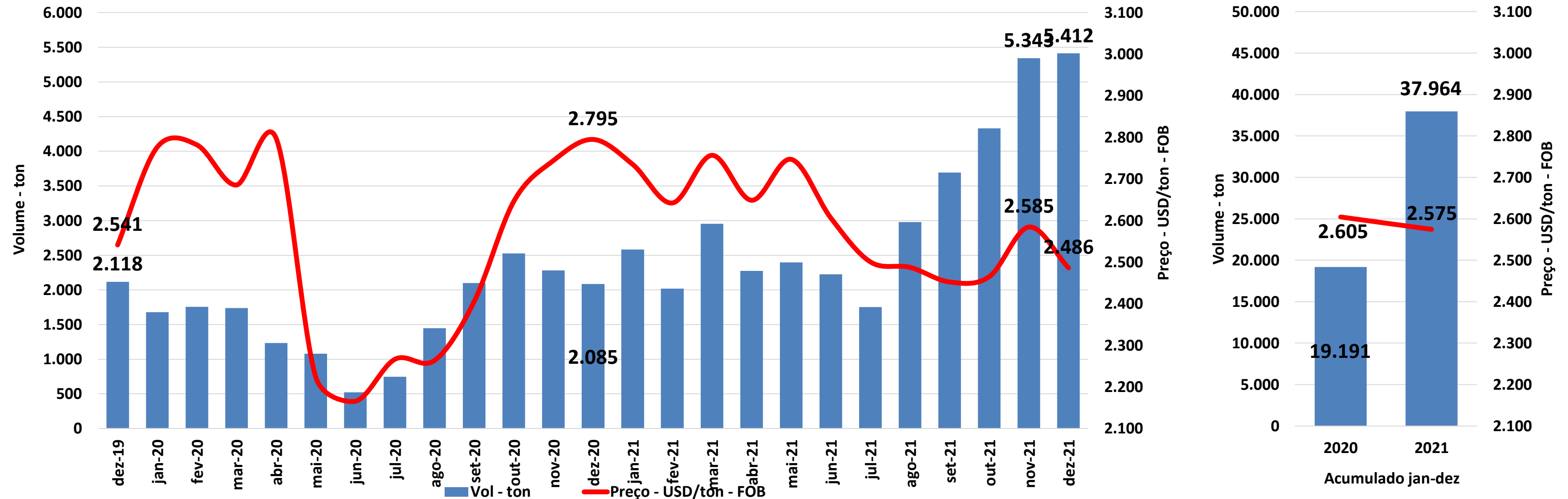
Quadro Comparativo	Volume		Preço		Receita	
	ton	%	USD/ton	%	USD	%
dez-21 x nov-21	↓ -1.633	-32,1%	↓ -115	-5,1%	↓ -4.043	-35,6%
dez-21 x dez-20	↓ -1.758	-33,7%	↓ -368	-14,8%	↓ -5.645	-43,5%
jan-dez/21 x jan-dez/20	↑ 17.202	39,2%	↑ 154	6,7%	↑ 49.176	48,5%

# URUGUAI



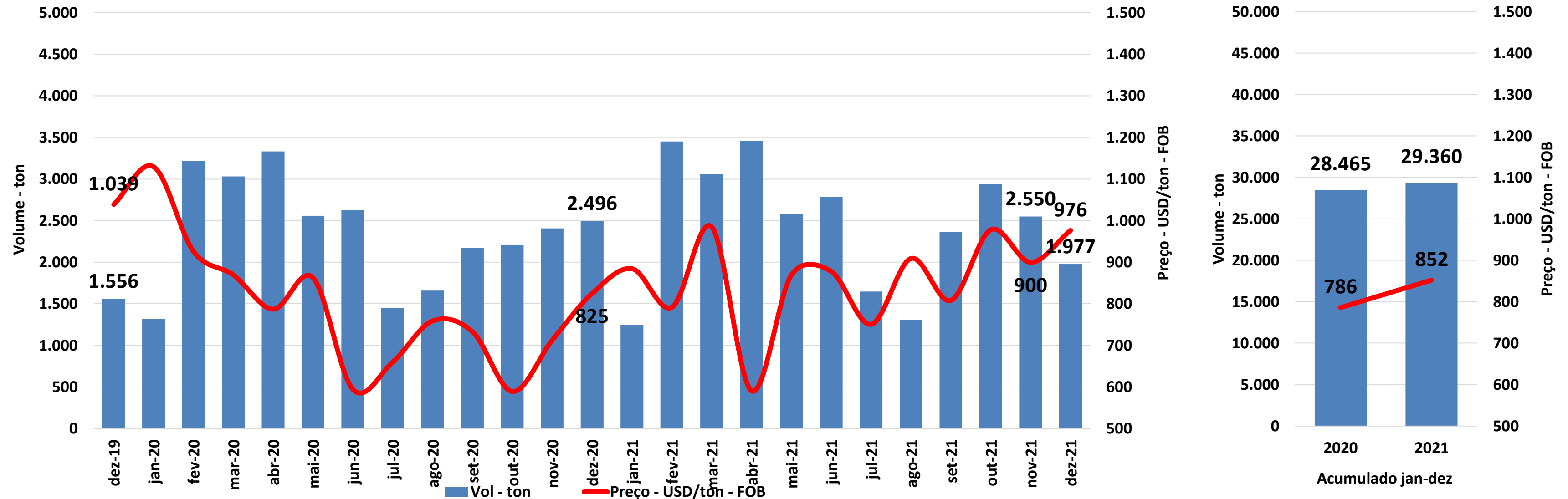
Quadro Comparativo	Volume		Preço		Receita	
	ton	%	USD/ton	%	USD	%
dez-21 x nov-21	↑ 100	2,3%	↑ 25	1,2%	↑ 331	3,5%
dez-21 x dez-20	↑ 1.433	48,8%	↓ -183	-7,6%	↑ 2.648	37,5%
jan-dez/21 x jan-dez/20	↑ 3.509	9,0%	↓ -110	-4,7%	↑ 3.563	3,9%

# ARGENTINA



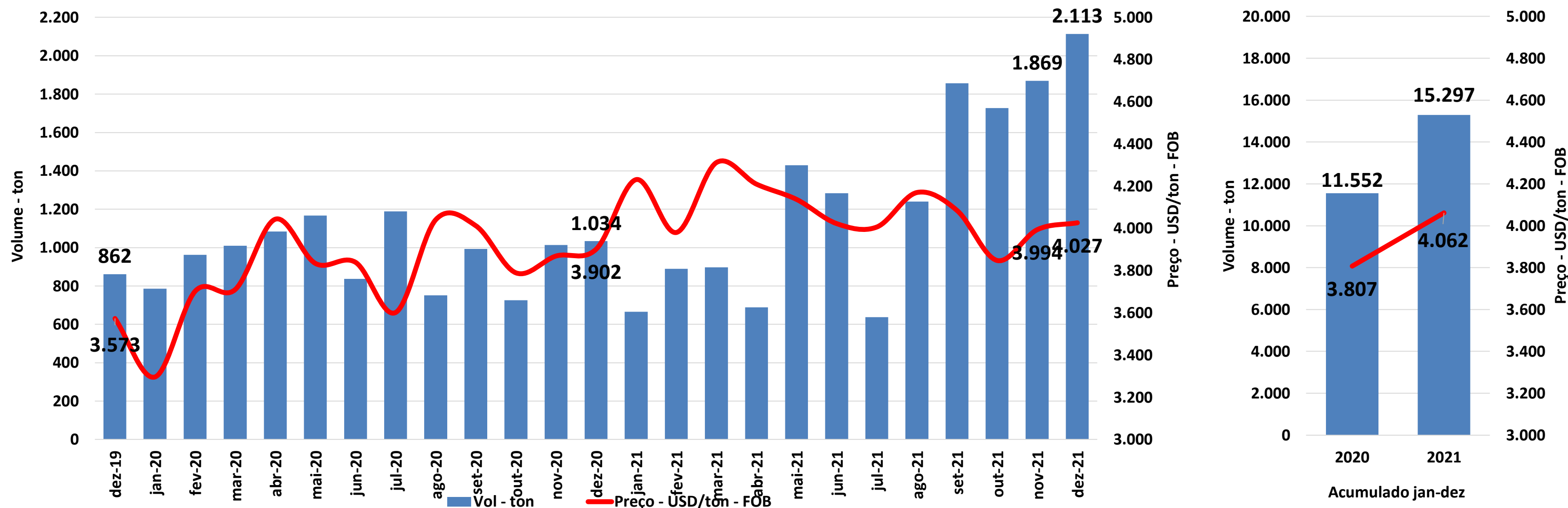
Quadro Comparativo	Volume		Preço		Receita	
	ton	%	USD/ton	%	USD	%
dez-21 x nov-21	↑ 69	1,3%	↓ -98	-3,8%	↓ -352	-2,5%
dez-21 x dez-20	↑ 3.327	159,5%	↓ -309	-11,0%	↑ 7.628	130,9%
jan-dez/21 x jan-dez/20	↑ 18.772	97,8%	↓ -30	-1,1%	↑ 47.763	95,6%

# ANGOLA



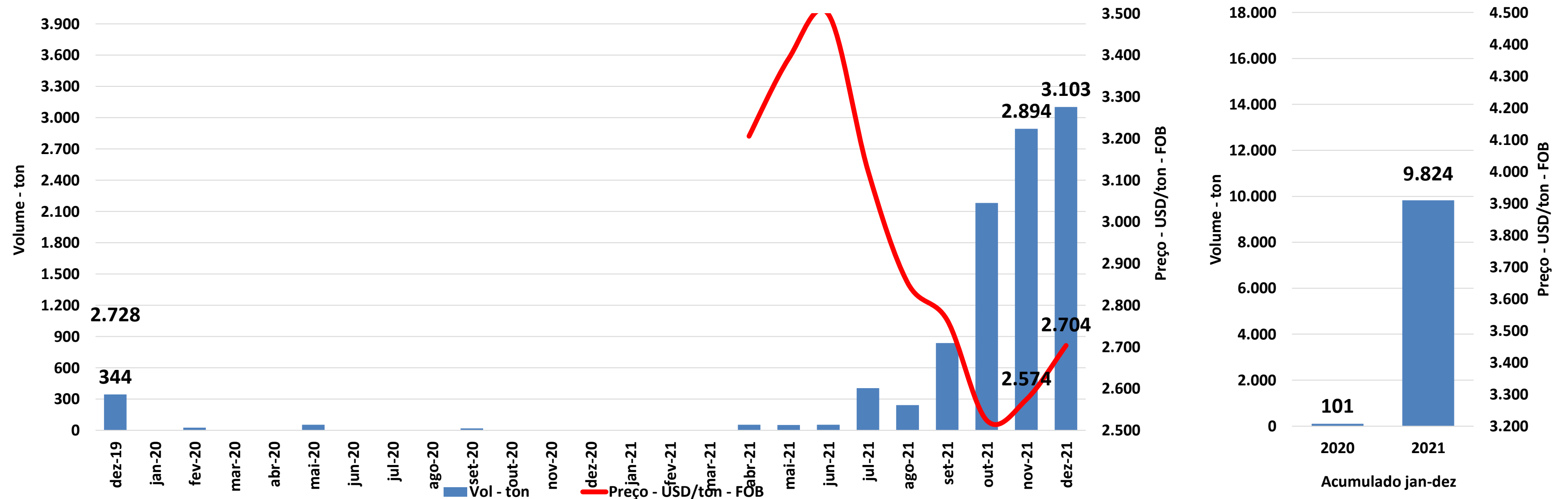
Quadro Comparativo	Volume		Preço		Receita	
	ton	%	USD/ton	%	USD	%
dez-21 x nov-21	↓ -573	-22,5%	↑ 77	8,5%	↓ -364	-15,9%
dez-21 x dez-20	↓ -519	-20,8%	↑ 152	18,4%	↓ -128	-6,2%
jan-dez/21 x jan-dez/20	↑ 895	3,1%	↑ 66	8,4%	↑ 2.641	11,8%

# JAPÃO



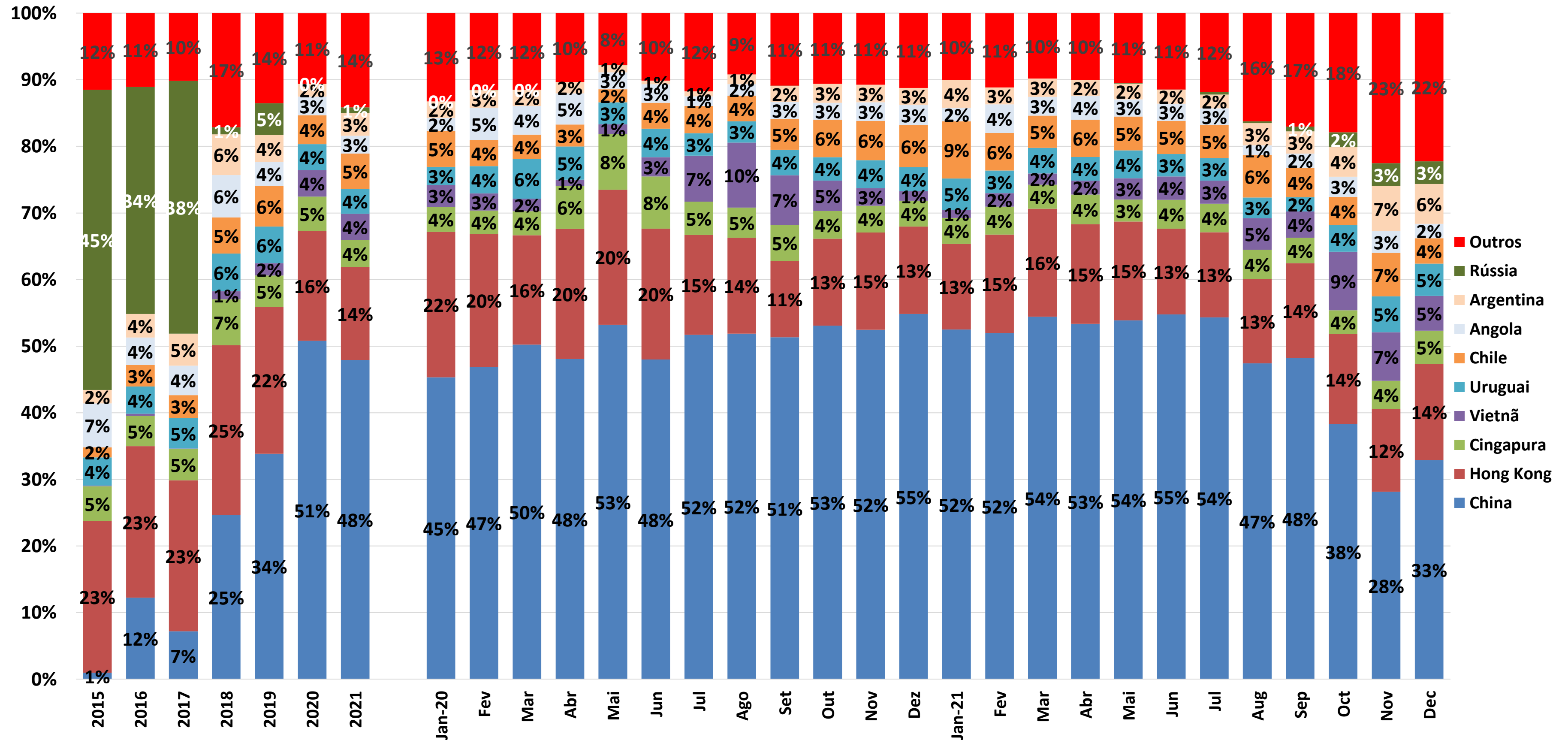
Quadro Comparativo	Volume		Preço		Receita	
	ton	%	USD/ton	%	USD	%
dez-21 x nov-21	↑ 244	13,1%	↑ 33	0,8%	↑ 1.043	14,0%
dez-21 x dez-20	↑ 1.080	104,4%	↑ 125	3,2%	↑ 4.476	111,0%
jan-dez/21 x jan-dez/20	↑ 3.746	32,4%	↑ 255	6,7%	↑ 18.157	41,3%

# RÚSSIA



Quadro Comparativo	Volume		Preço		Receita	
	ton	%	USD/ton	%	USD	%
dez-21 x nov-21	↑ 209	7,2%	↑ 129	5,0%	↑ 940	12,6%
dez-21 x dez-20	↑ 3.103		↑ 2.704		↑ 8.389	
jan-dez/21 x jan-dez/20	↑ 9.723	9652,4%	↓ -281	-9,6%	↑ 25.860	8720,4%

# MARKET SHARE - MERCADOS SELECIONADOS



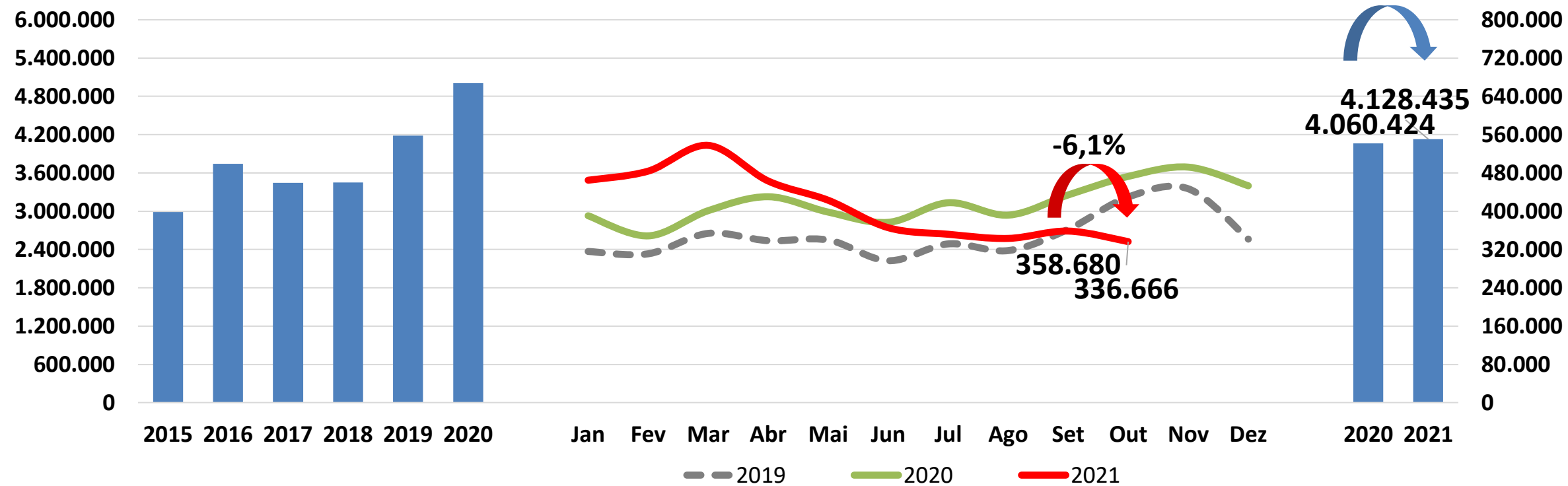
# EVOLUÇÃO DOS PRINCIPAIS CONCORRENTES

- EUROPA (out/21)
- ESTADOS UNIDOS (nov/21)
- CANADÁ (nov/21)
- RÚSSIA (out/21)



# EUROPA (EU-27)

## Europa – Suíno Total – Volume – mt

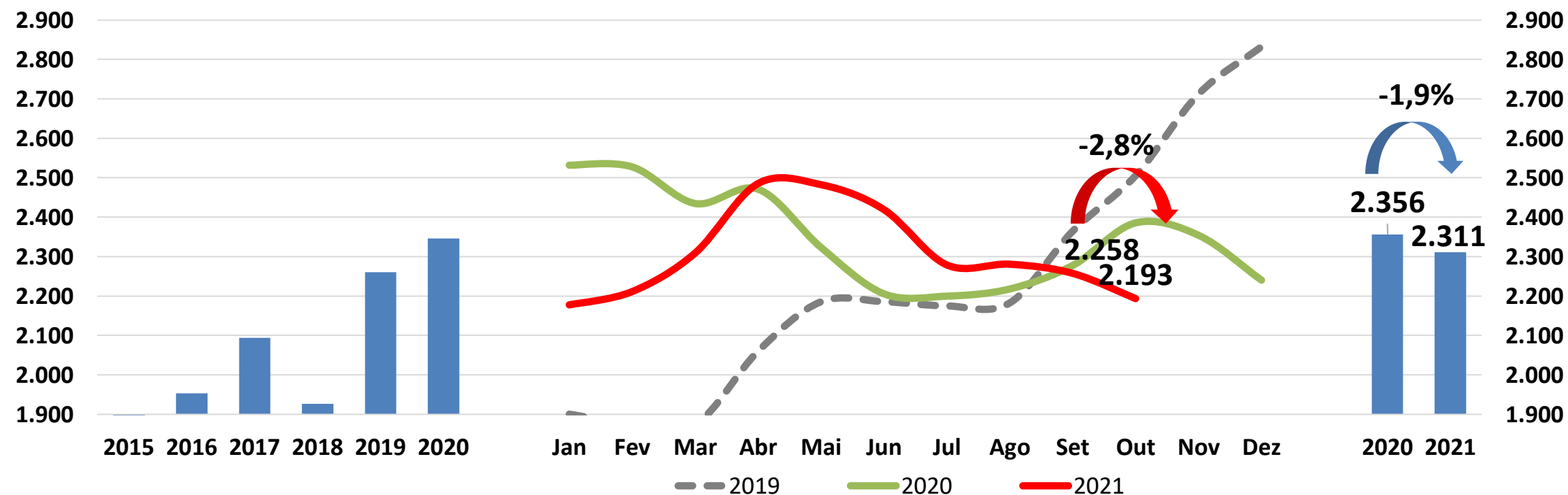


### Volume:

Redução de 22.014mt em out/21, cerca de 6,1% abaixo de set/21.

No acumulado jan-out/21, houve aumento de 68.011mt cerca de 1,7% acima de jan-out/20.

## Europa – Suíno Total – Preço – EU/mt – FOB



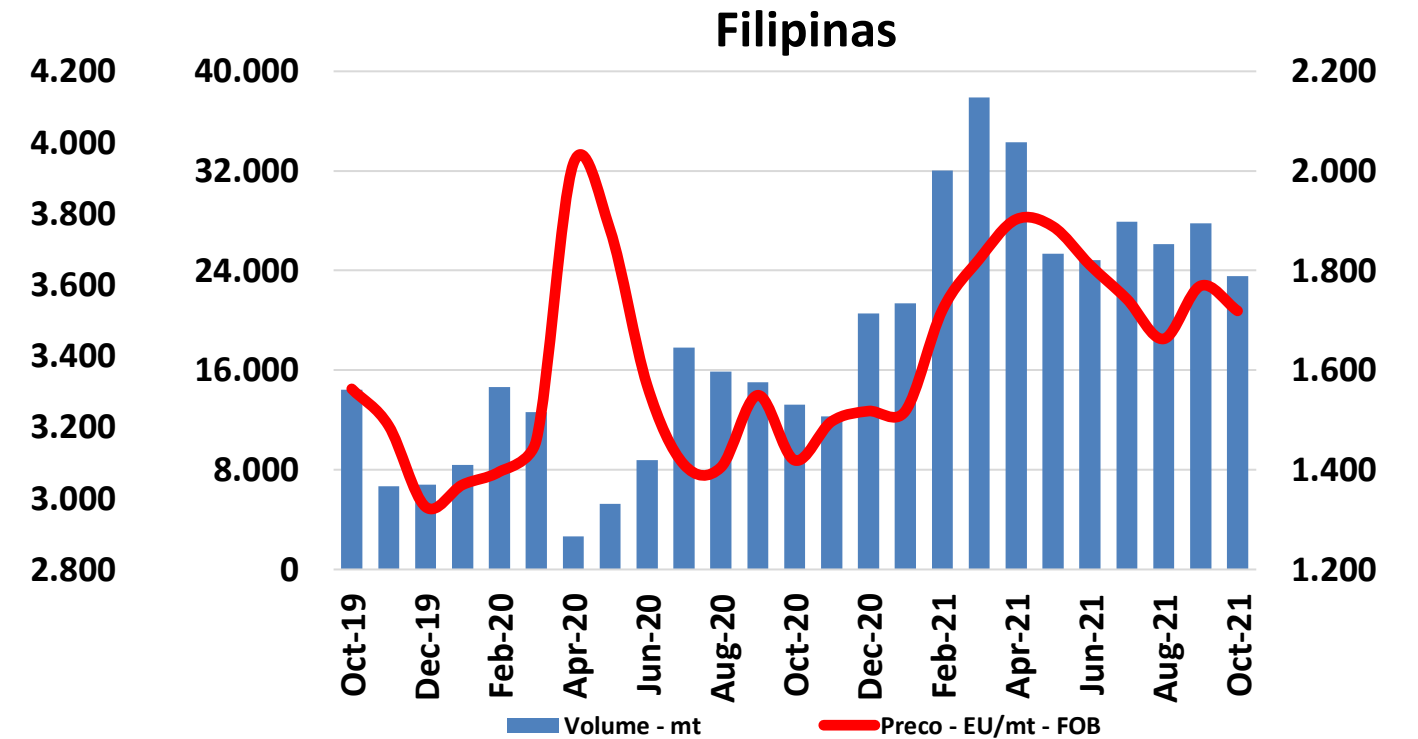
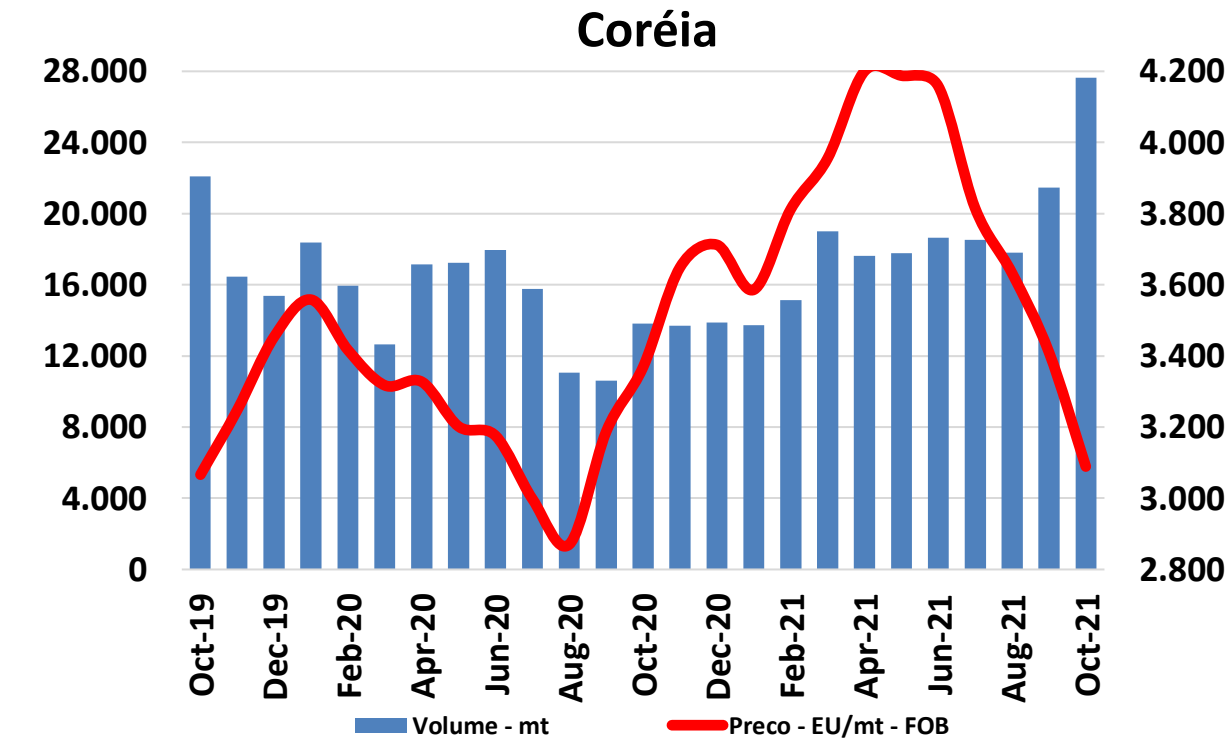
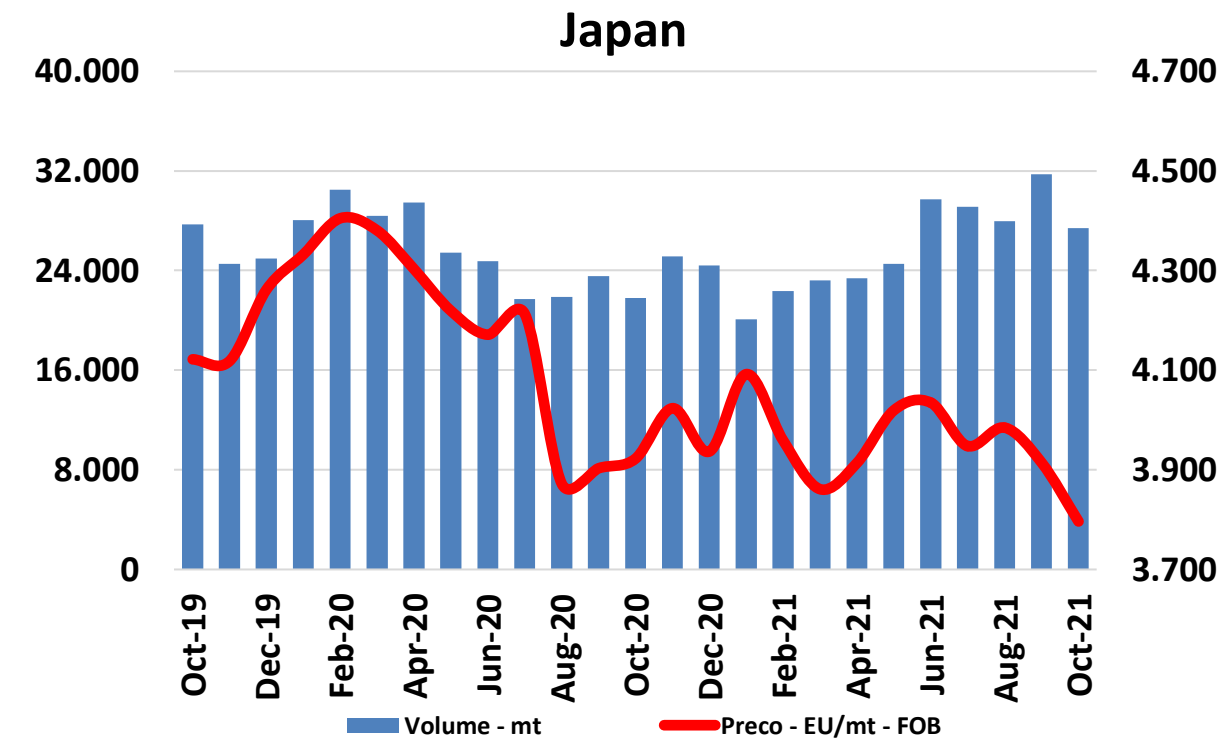
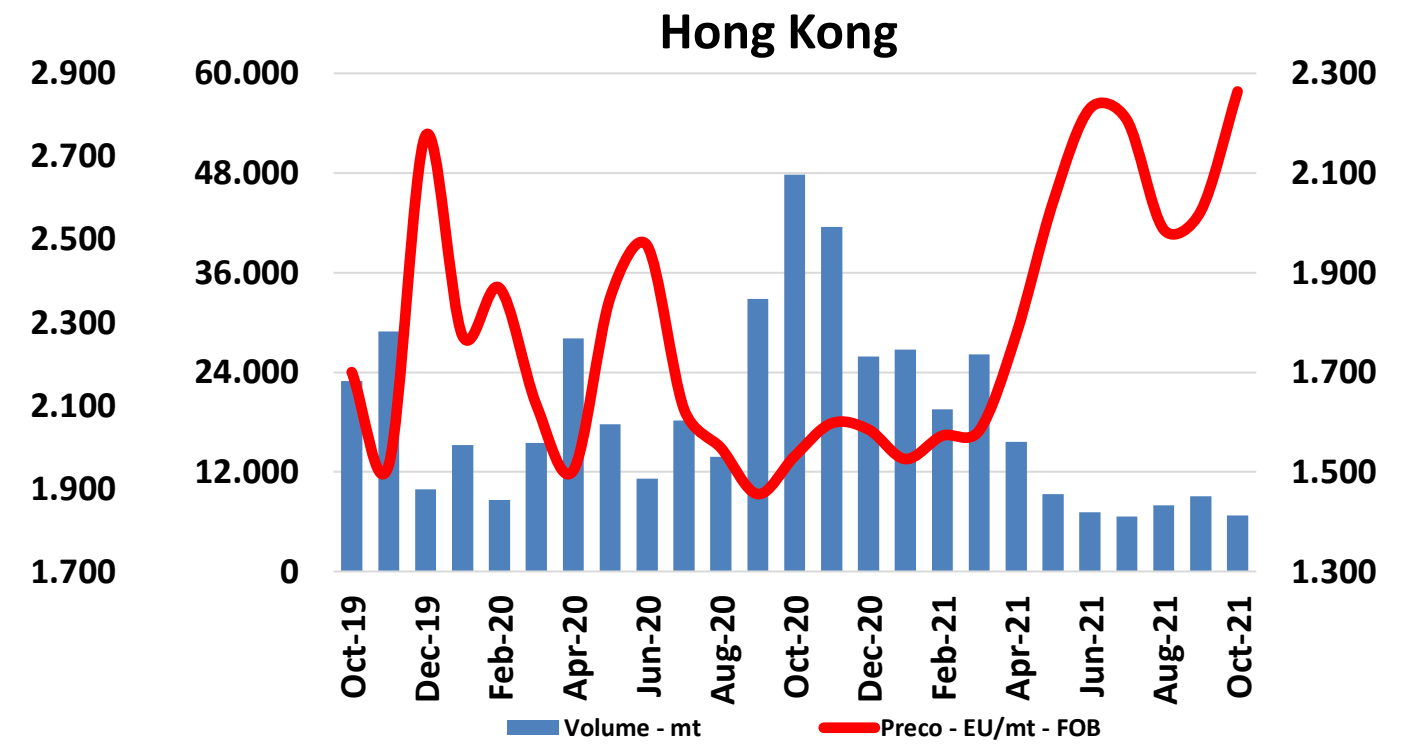
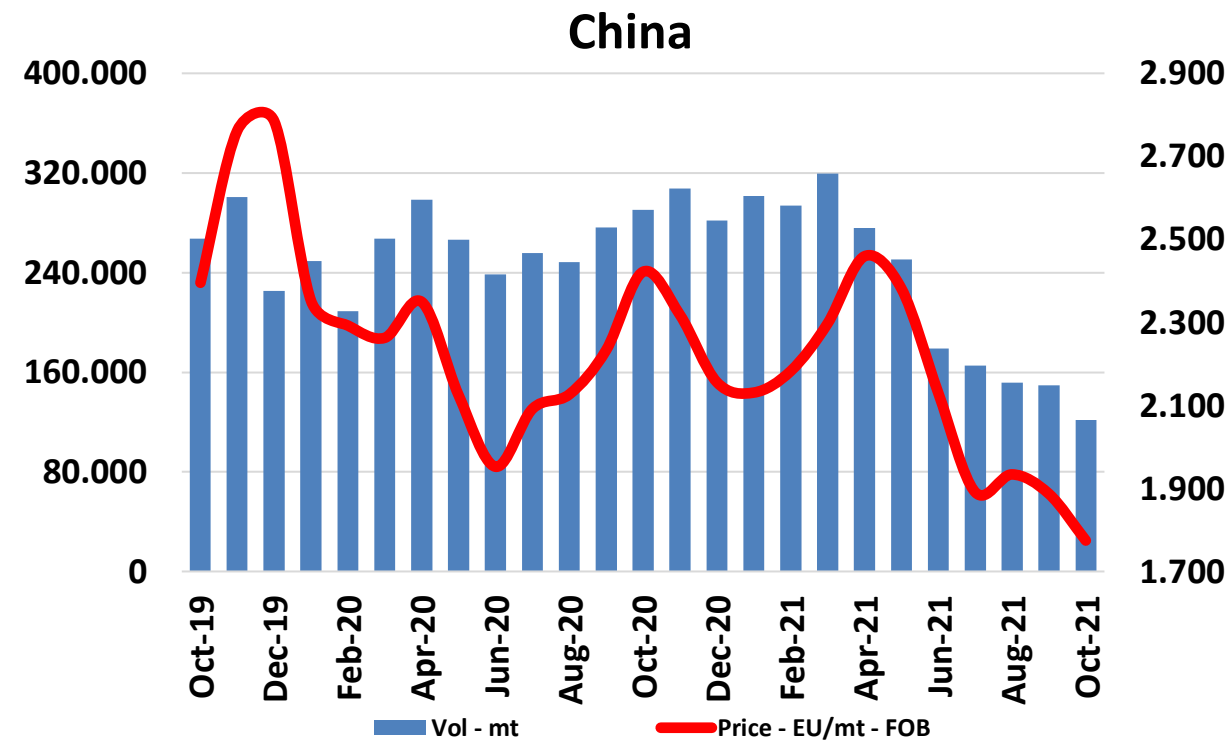
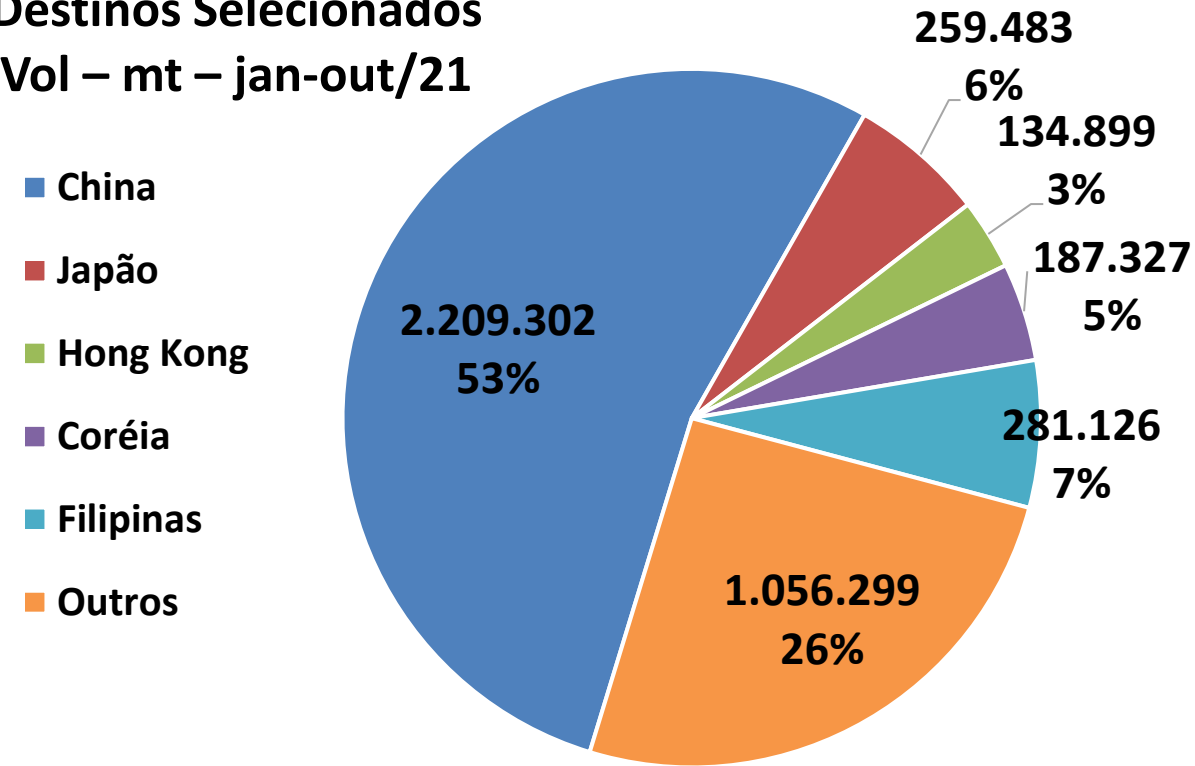
### Preço:

Queda de EU 64/mt em out/21, cerca de 2,8% abaixo de set/21.

De jan-out/21 houve uma queda de EU 45/mt, cerca de -1,9% comparado a 2020.

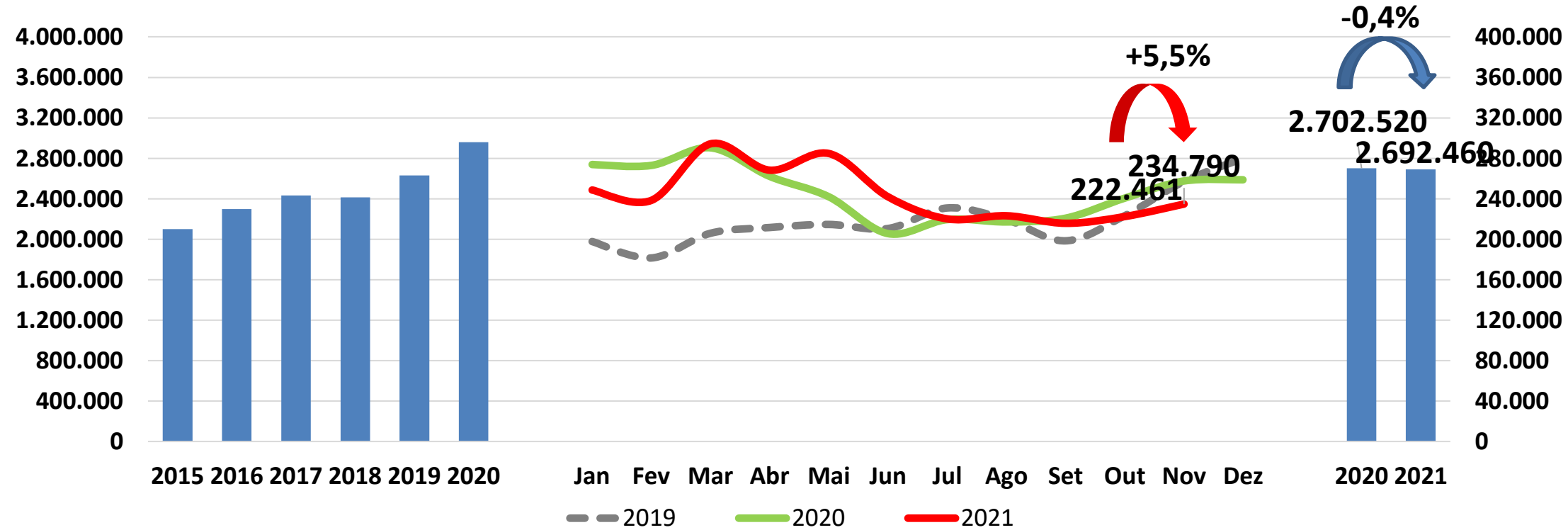
# EUROPA - EU-27 - DESTINOS SELECIONADOS - VOLUME E PREÇO

Destinos Selecionados  
Vol – mt – jan-out/21



# ESTADOS UNIDOS

USA – Suíno Total – Volume – mt

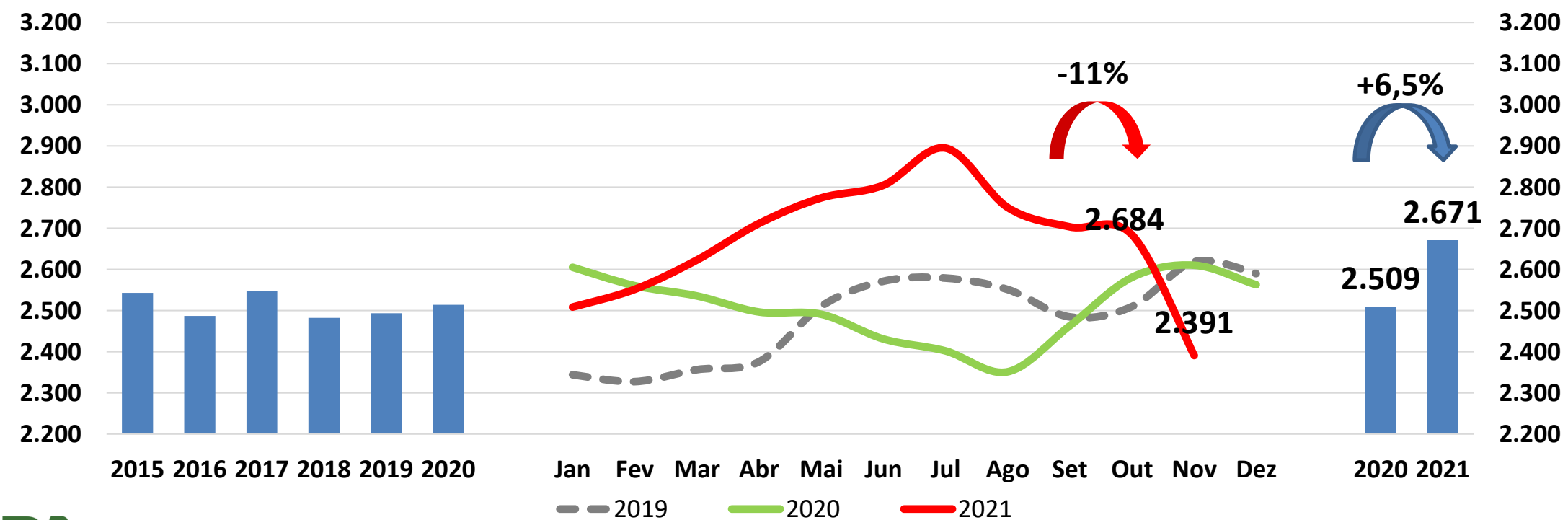


**Volume:**

Aumento de 12.329mt em nov/21, cerca de 5,5% acima de out/21.

No acumulado jan-nov/21 houve redução de 10.060mt, cerca de 0,4% abaixo do mesmo período de 2020.

USA – Suíno Total – Preço – USD/mt – FOB



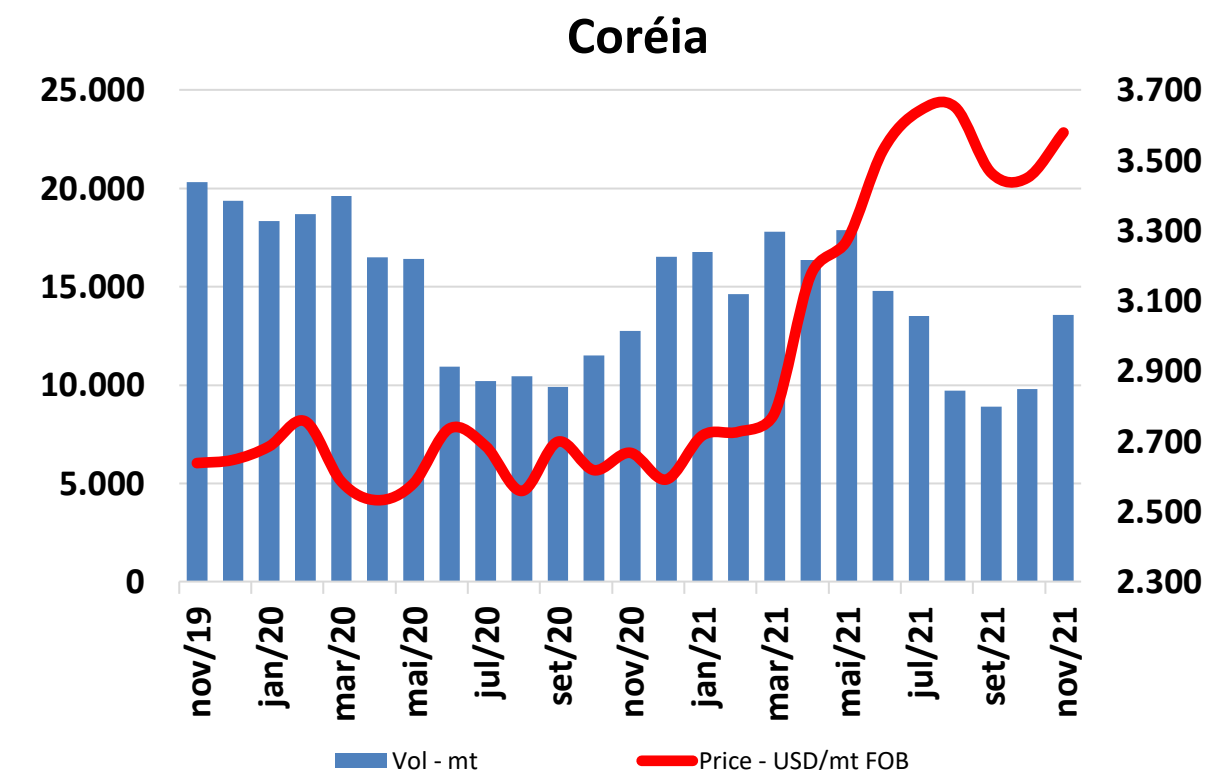
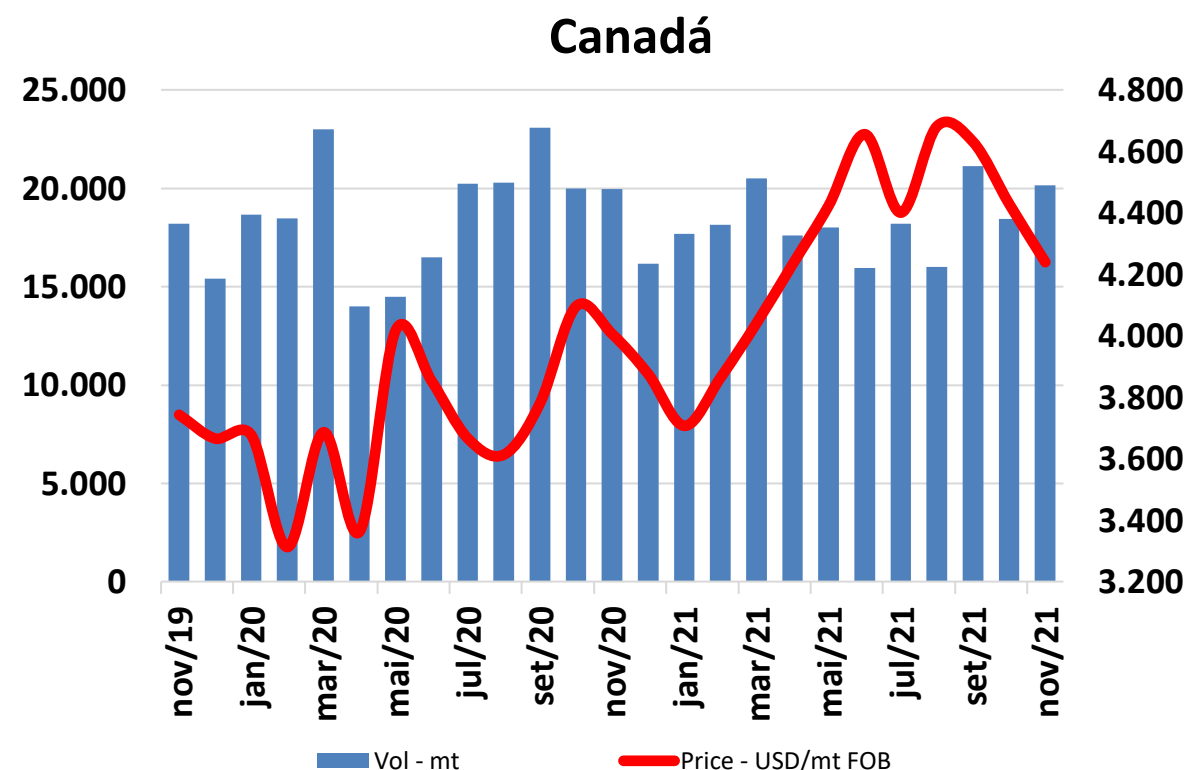
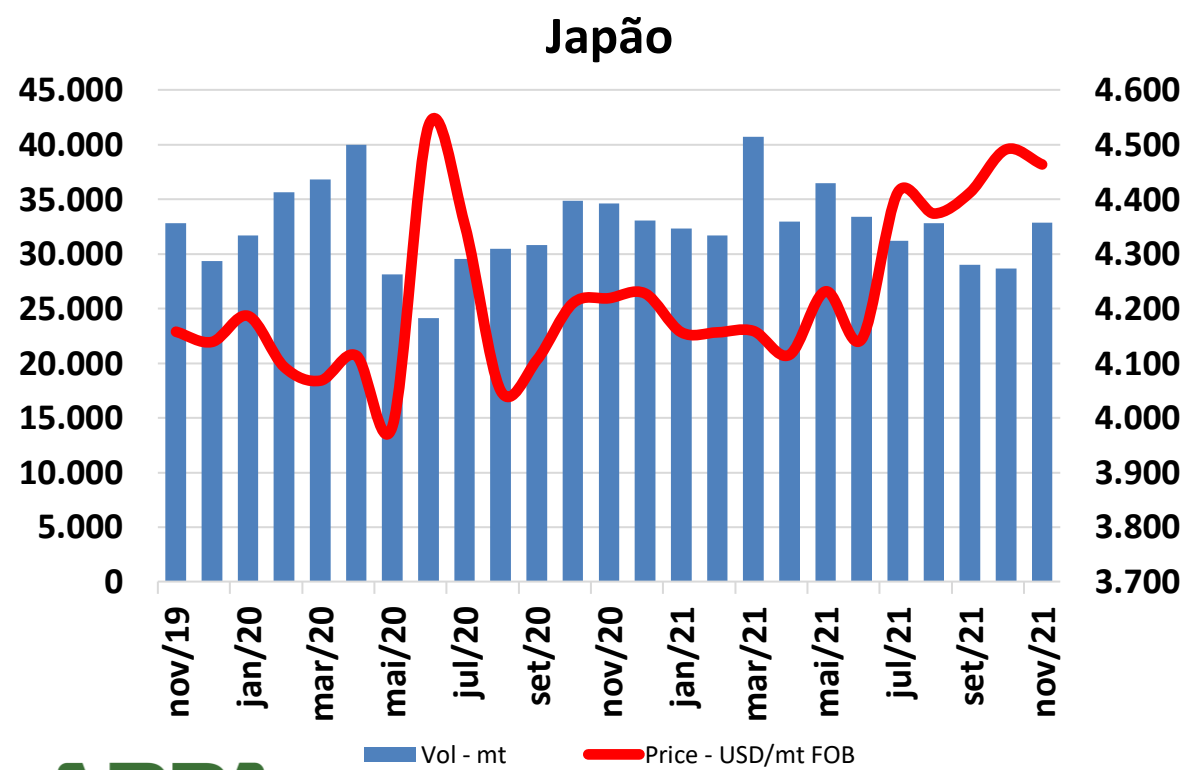
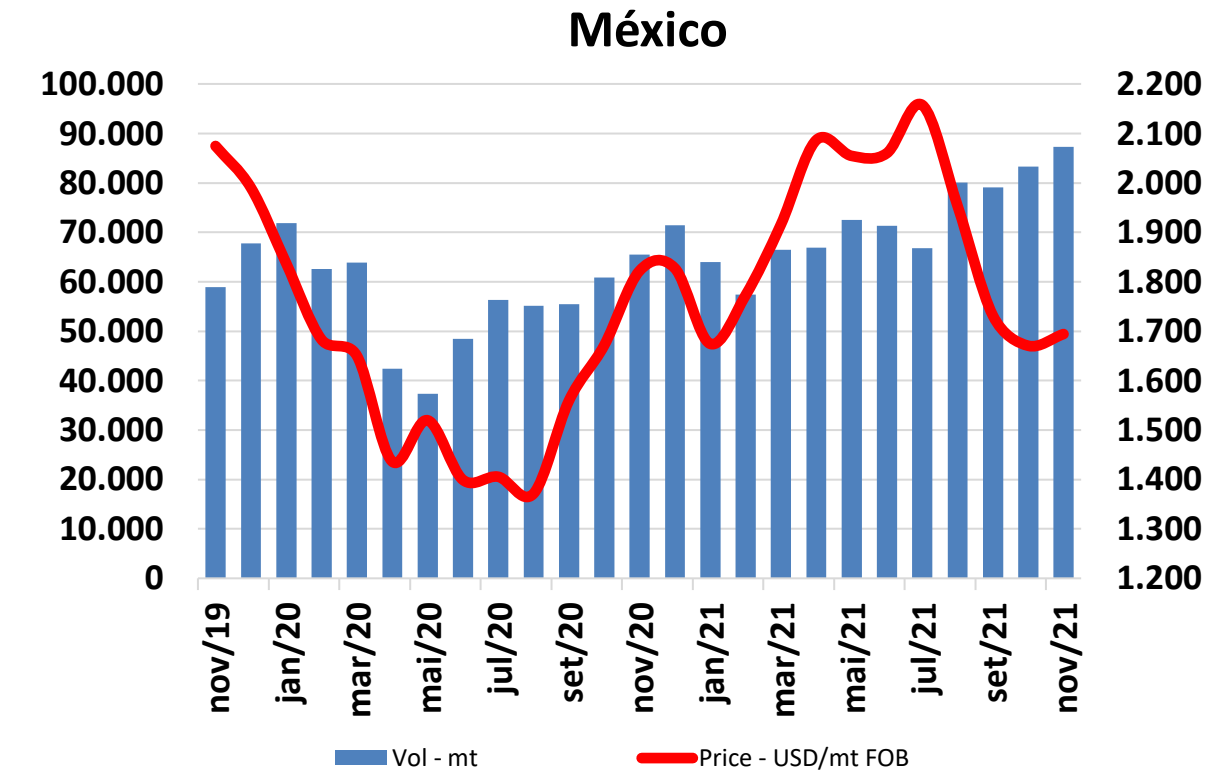
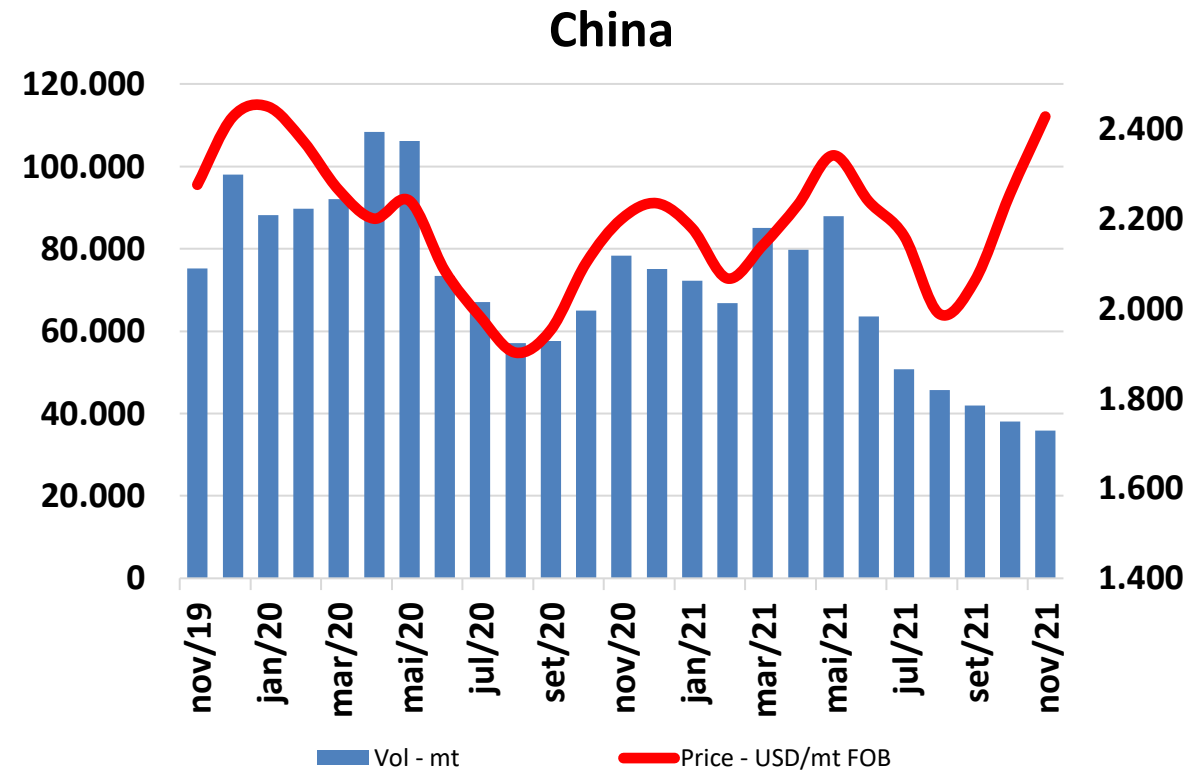
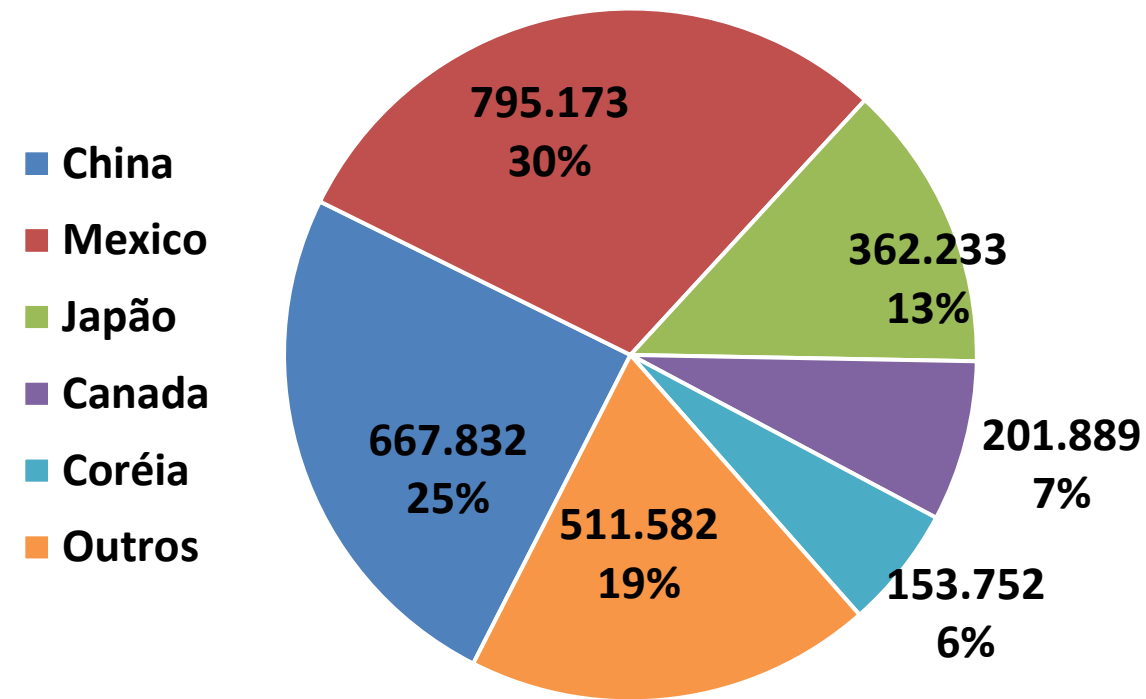
**Preço:**

Com queda de USD 293/mt, o preço ficou cerca de 11% abaixo de out/21.

No acumulado de jan-nov/21, o preço aumentou em USD 162/mt, cerca de 6,5% acima do mesmo período de 2020.

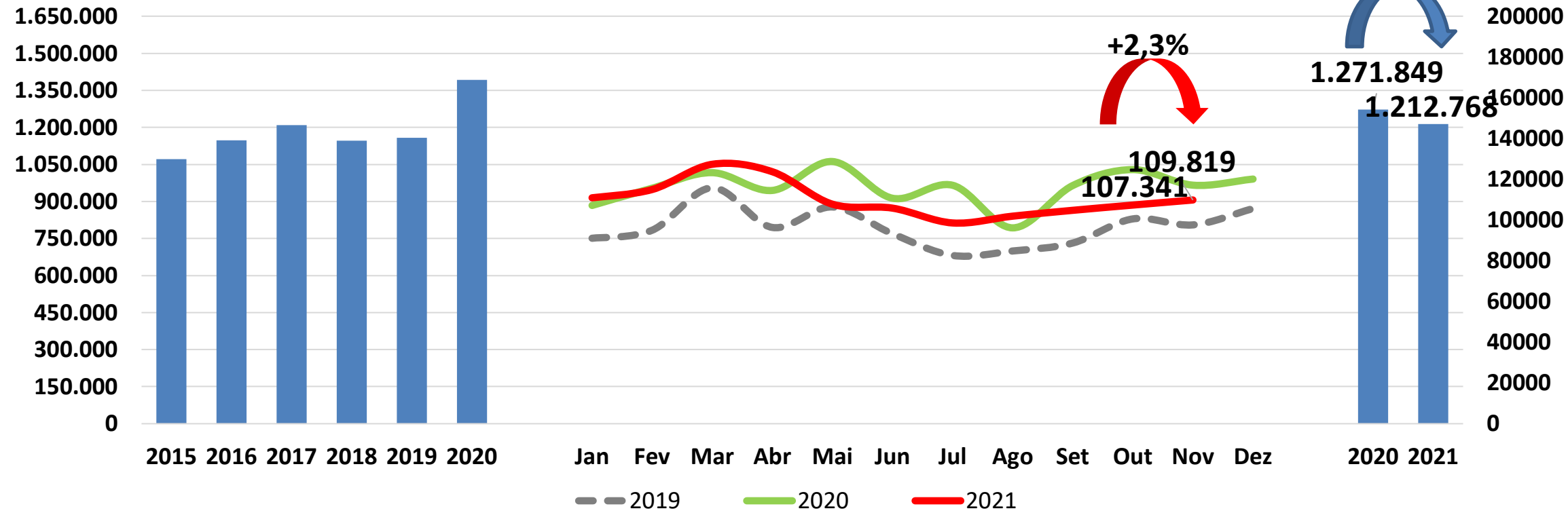
# ESTADOS UNIDOS - DESTINOS SELECIONADOS - VOLUME E PREÇO

Destinos Selecionados  
Vol - mt - Jan-Nov 21



# CANADÁ

Canadá – Suíno Total – Volume – mt

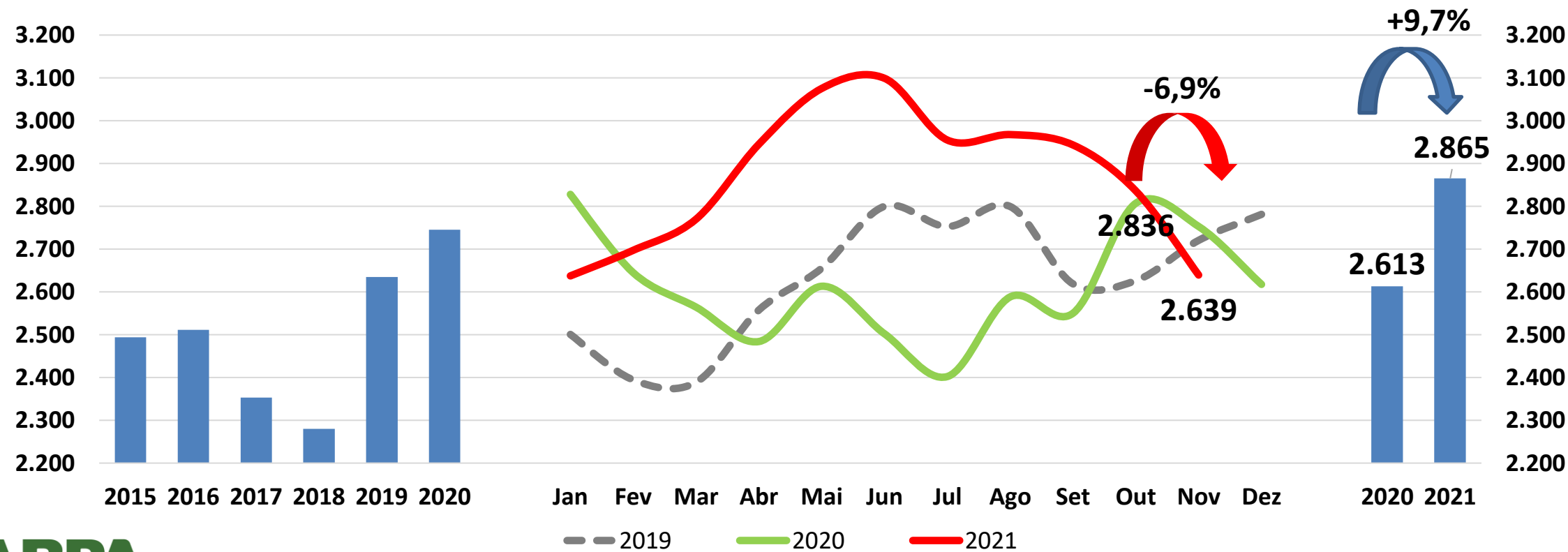


**Volume:**

Aumento de 2.478mt em nov/21 cerca de 2,3% acima mês de out/21.

No acumulado de jan-nov/21 houve redução de 59.081mt, cerca de 4,6% abaixo de 2020.

Canadá – Suíno Total – Preço – USD/mt – FOB



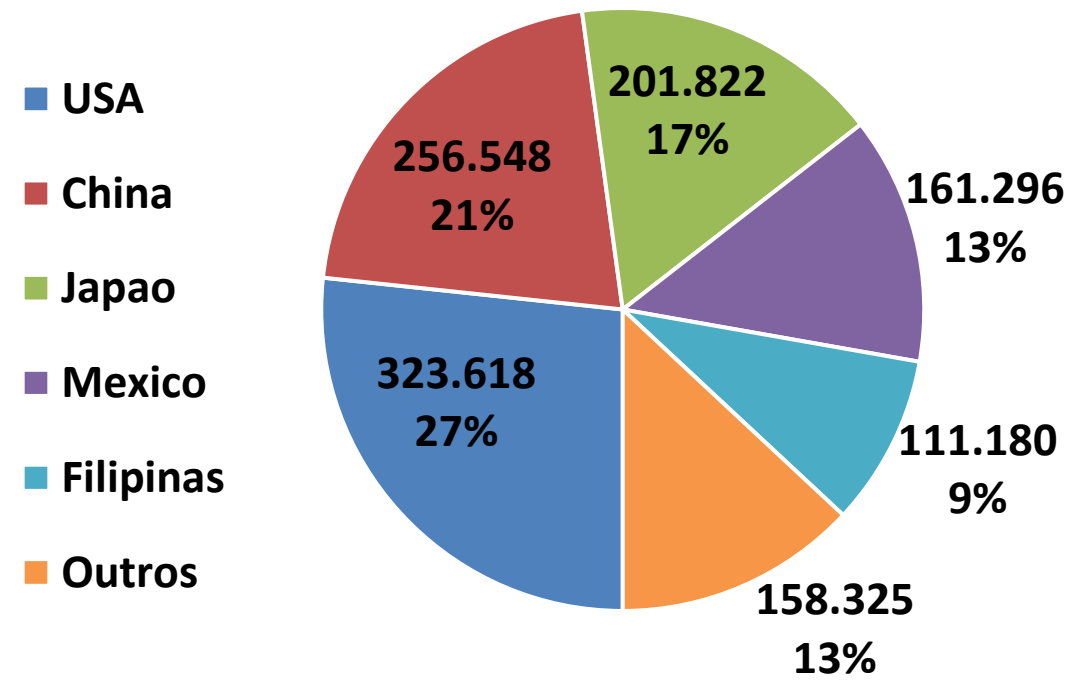
**Preço:**

Redução de USD 197/mt cerca de 6,9% abaixo do mês de out/21.

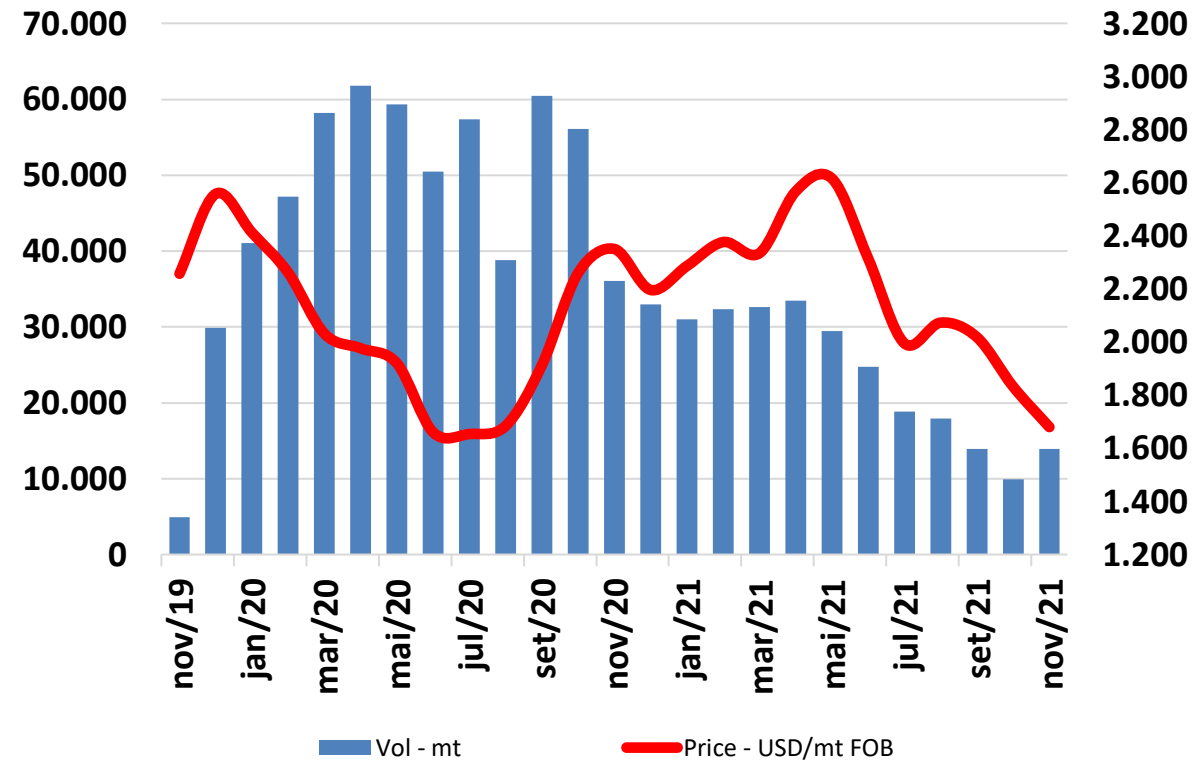
No acumulado de jan-nov/21 houve aumento de USD 252/mt, cerca de 9,7% acima de 2020.

# CANADÁ - DESTINOS SELECIONADOS - VOLUME E PREÇO

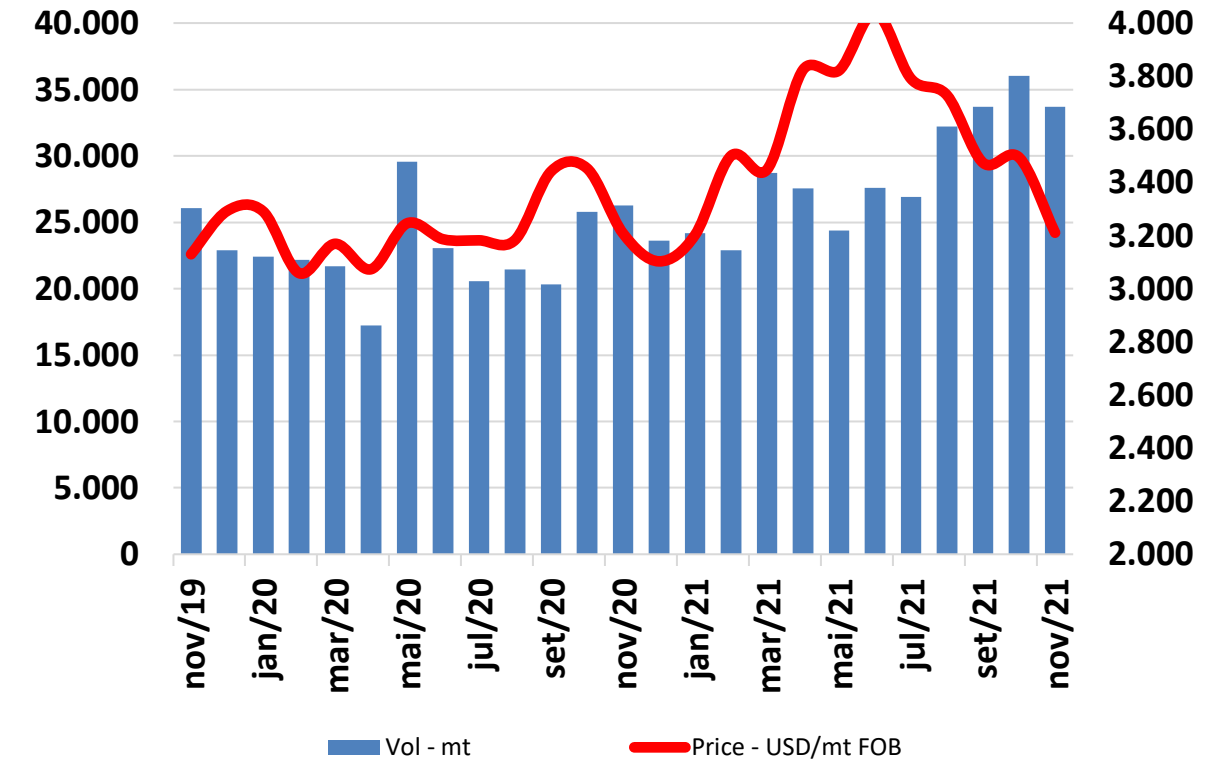
Destinos Selecionados  
Vol - mt - Jan-Nov/21



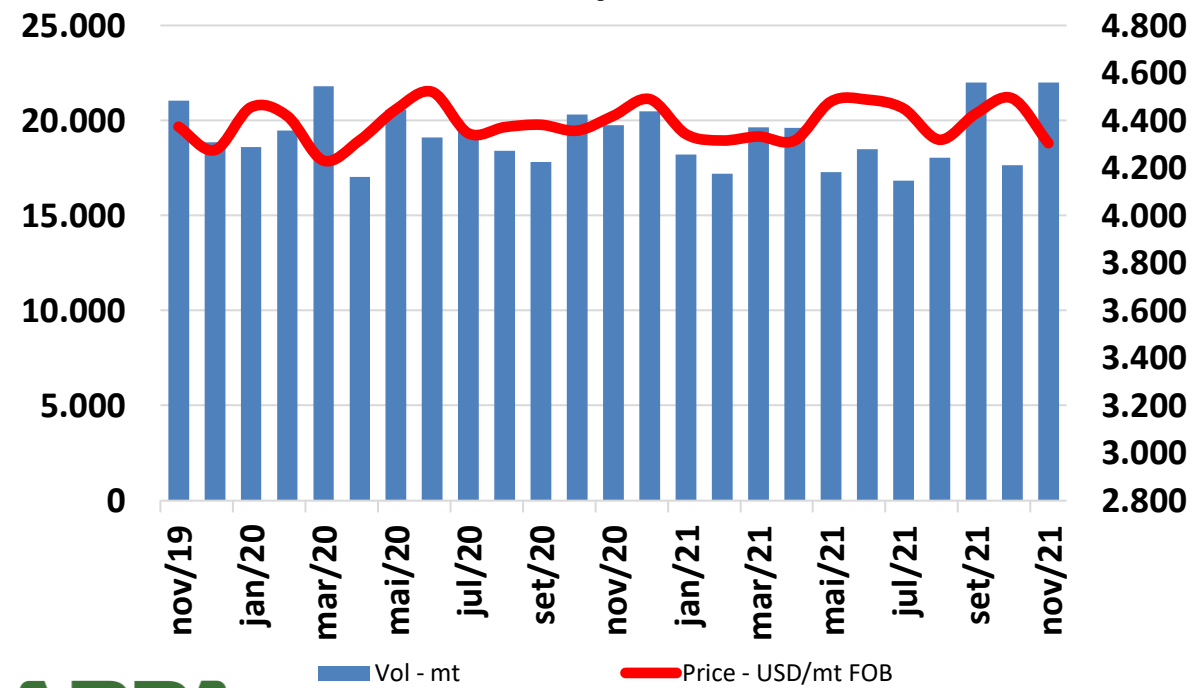
China



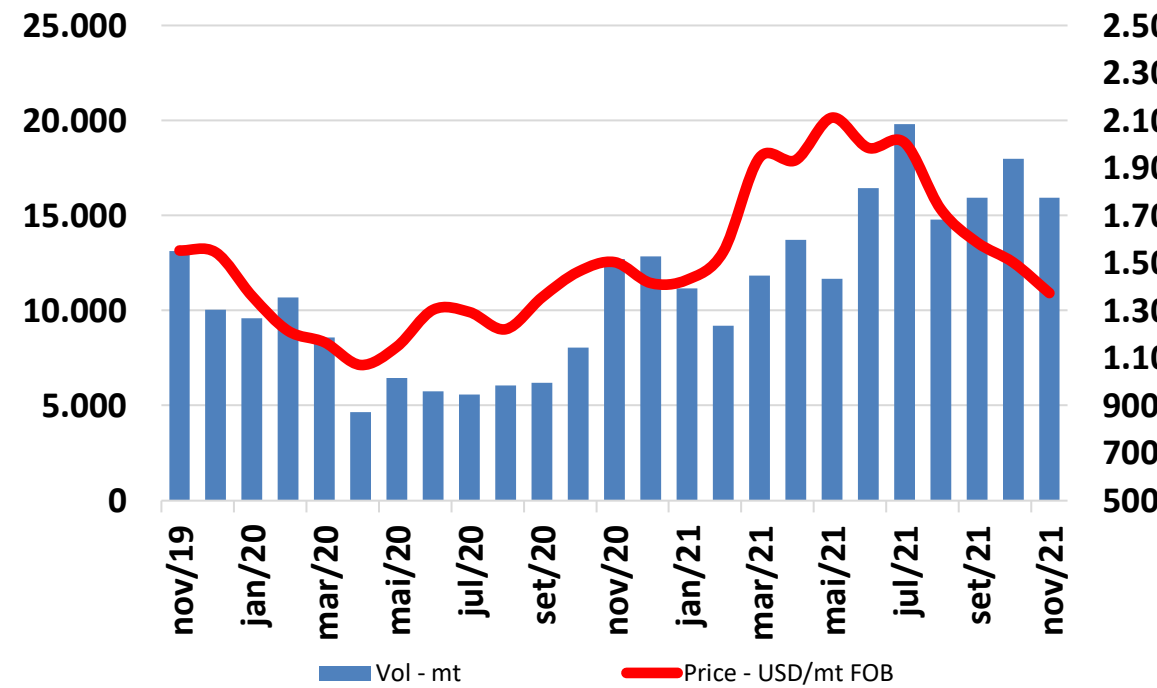
USA



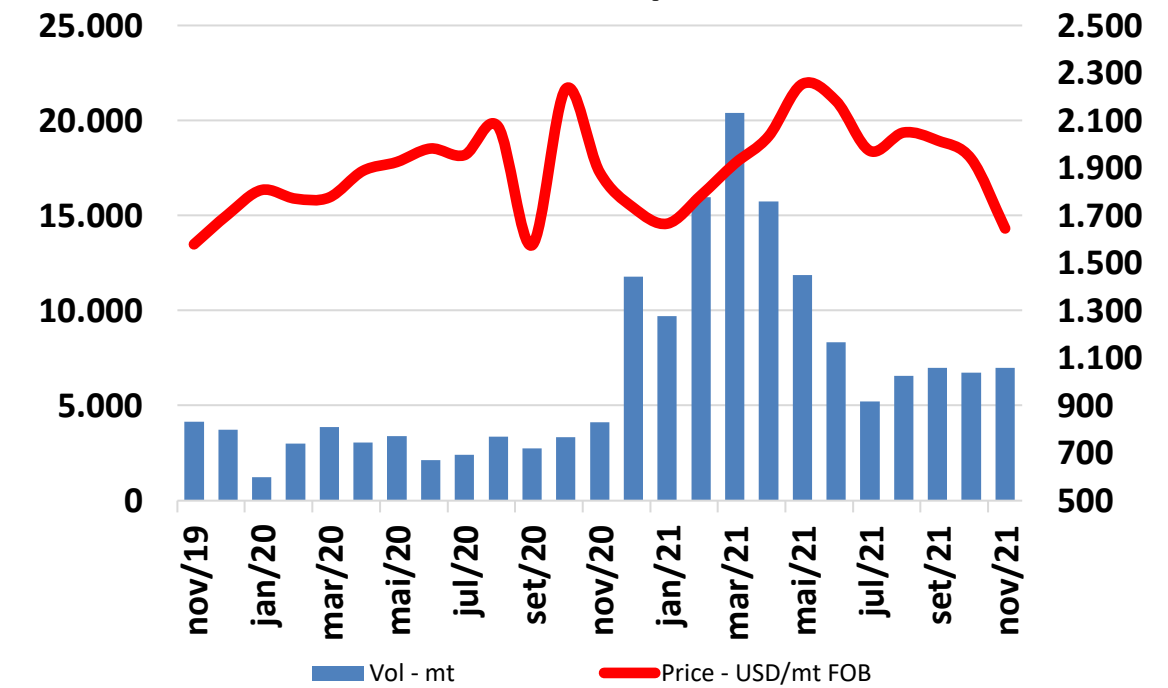
Japan



Mexico

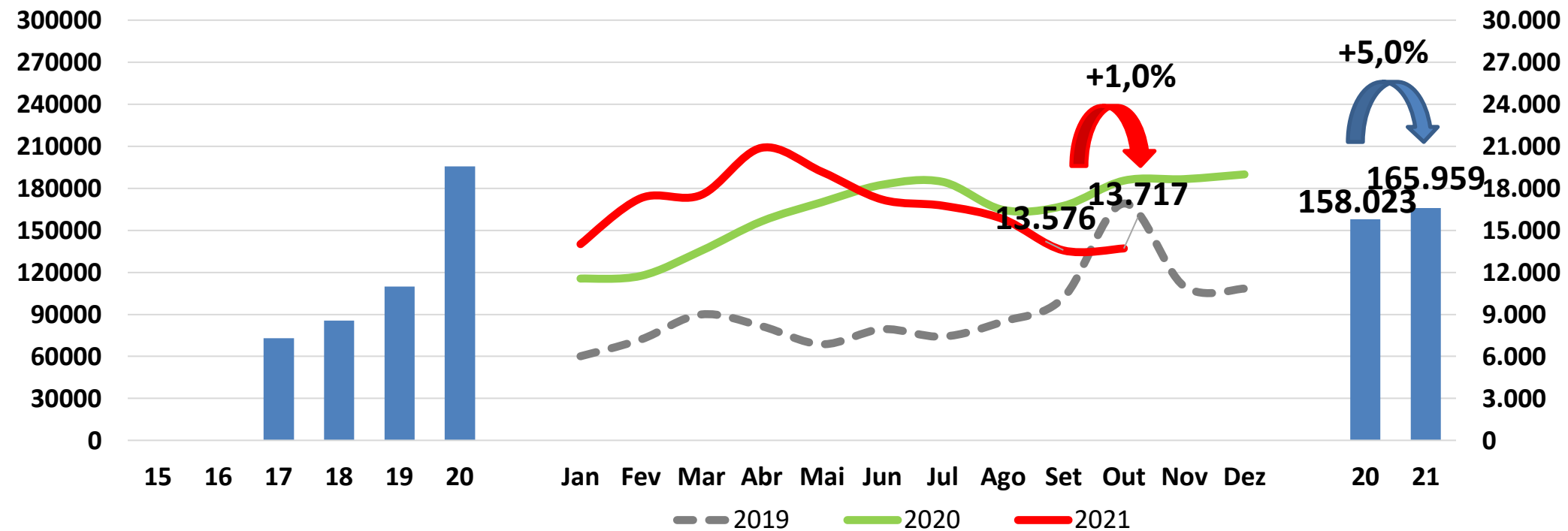


Phillipinas



# RÚSSIA

Rússia – Suíno Total – Volume – mt

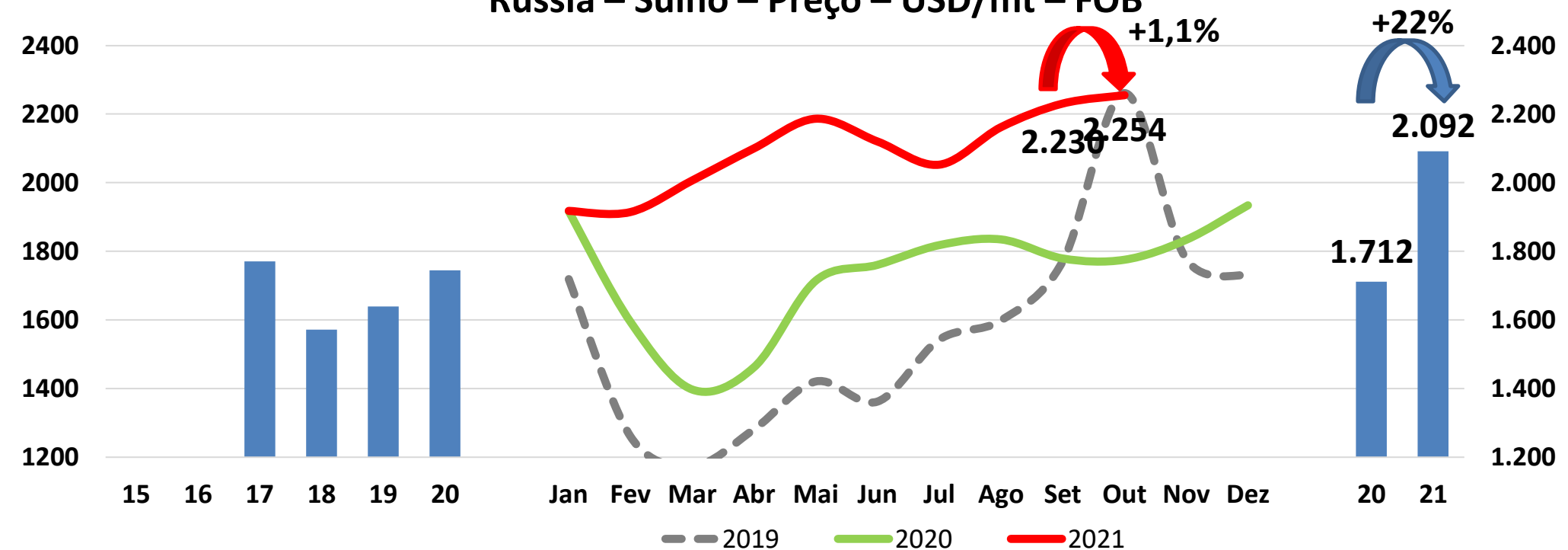


## Volume:

Aumento de 141mt em out/21, cerca de 1,0% acima do mês anterior.

No acumulado de jan-out/21 houve aumento de 7.936mt cerca de 5,0% acima do mesmo período de 2020.

Rússia – Suíno – Preço – USD/mt – FOB



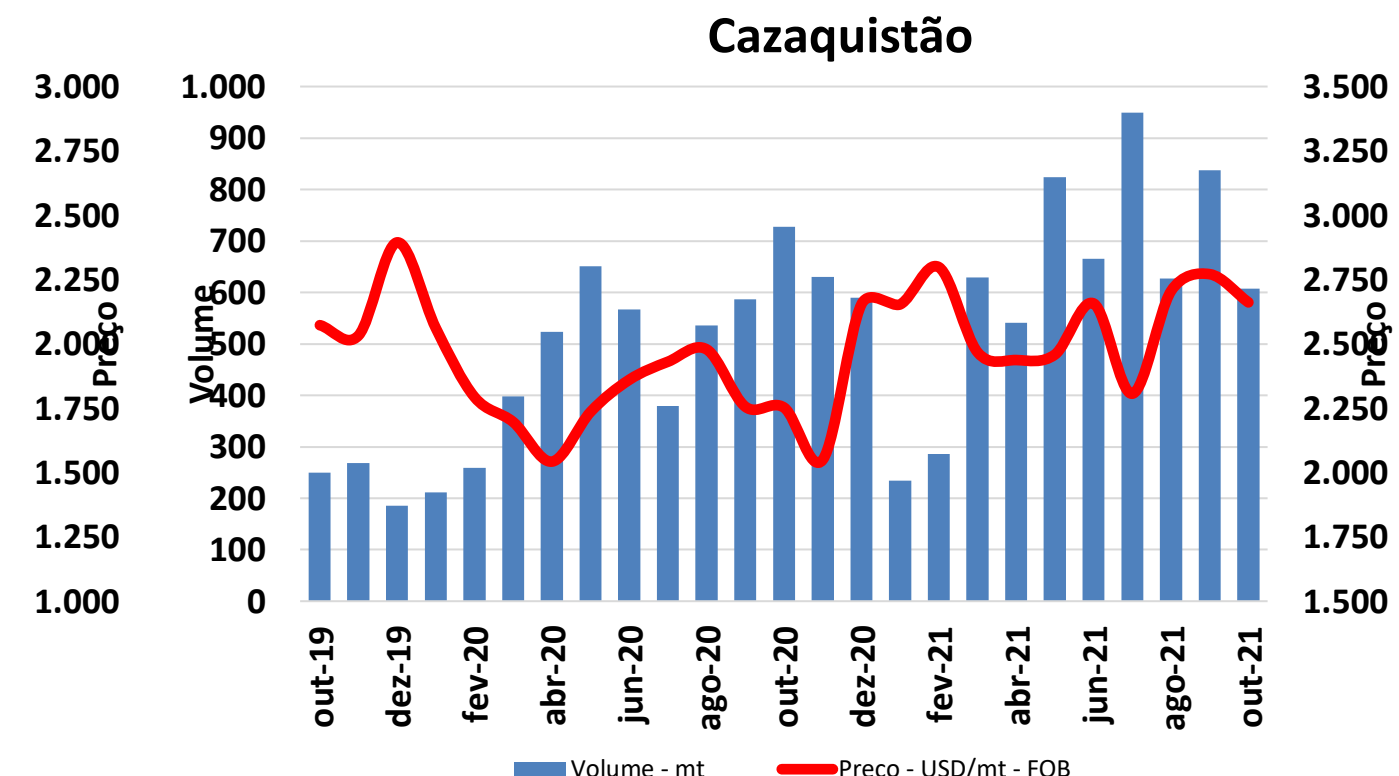
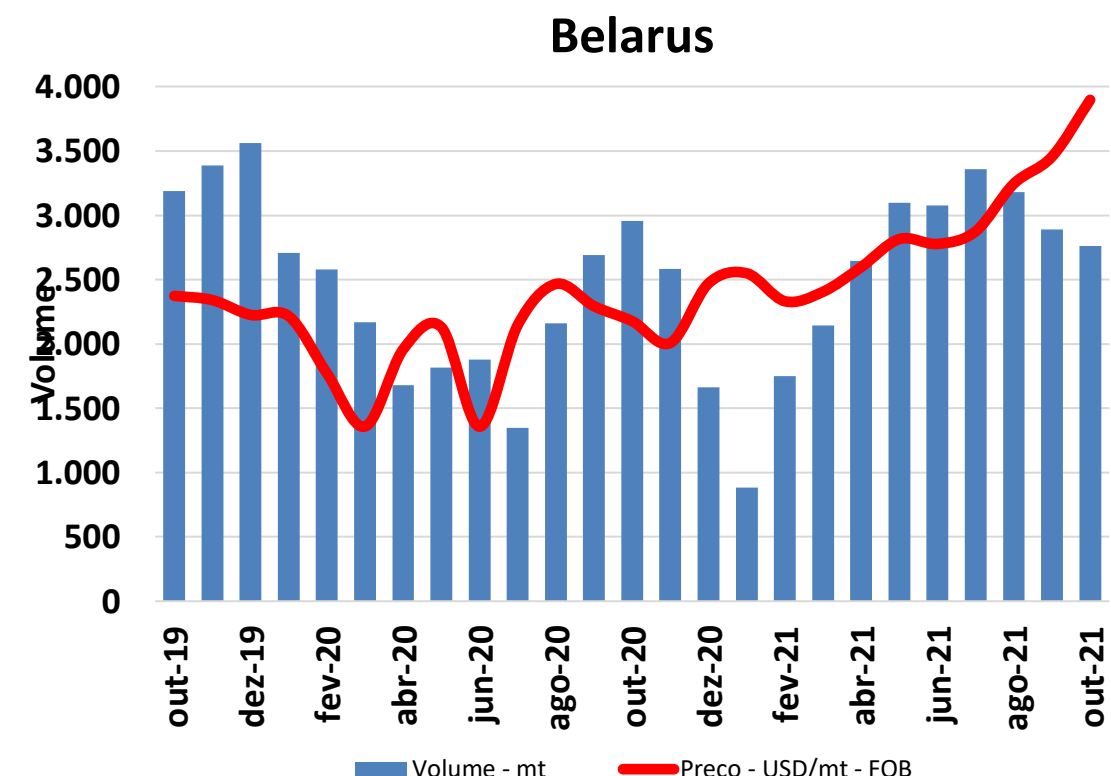
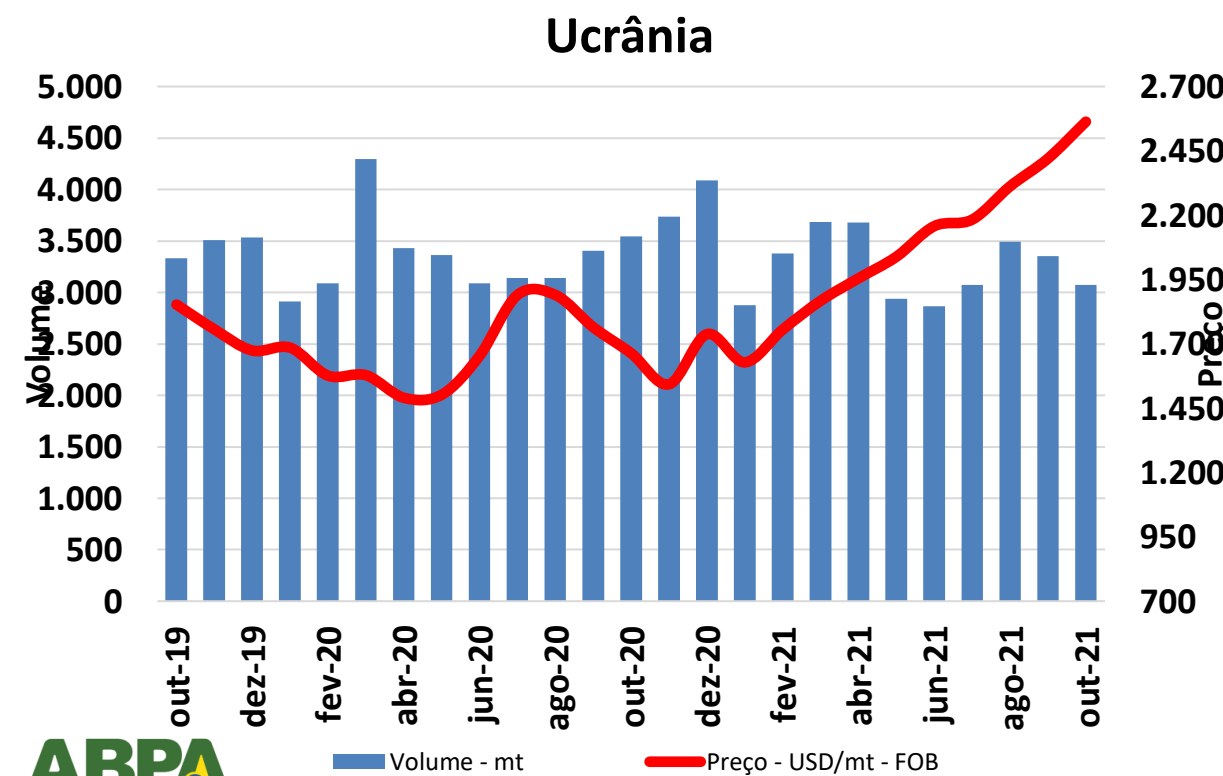
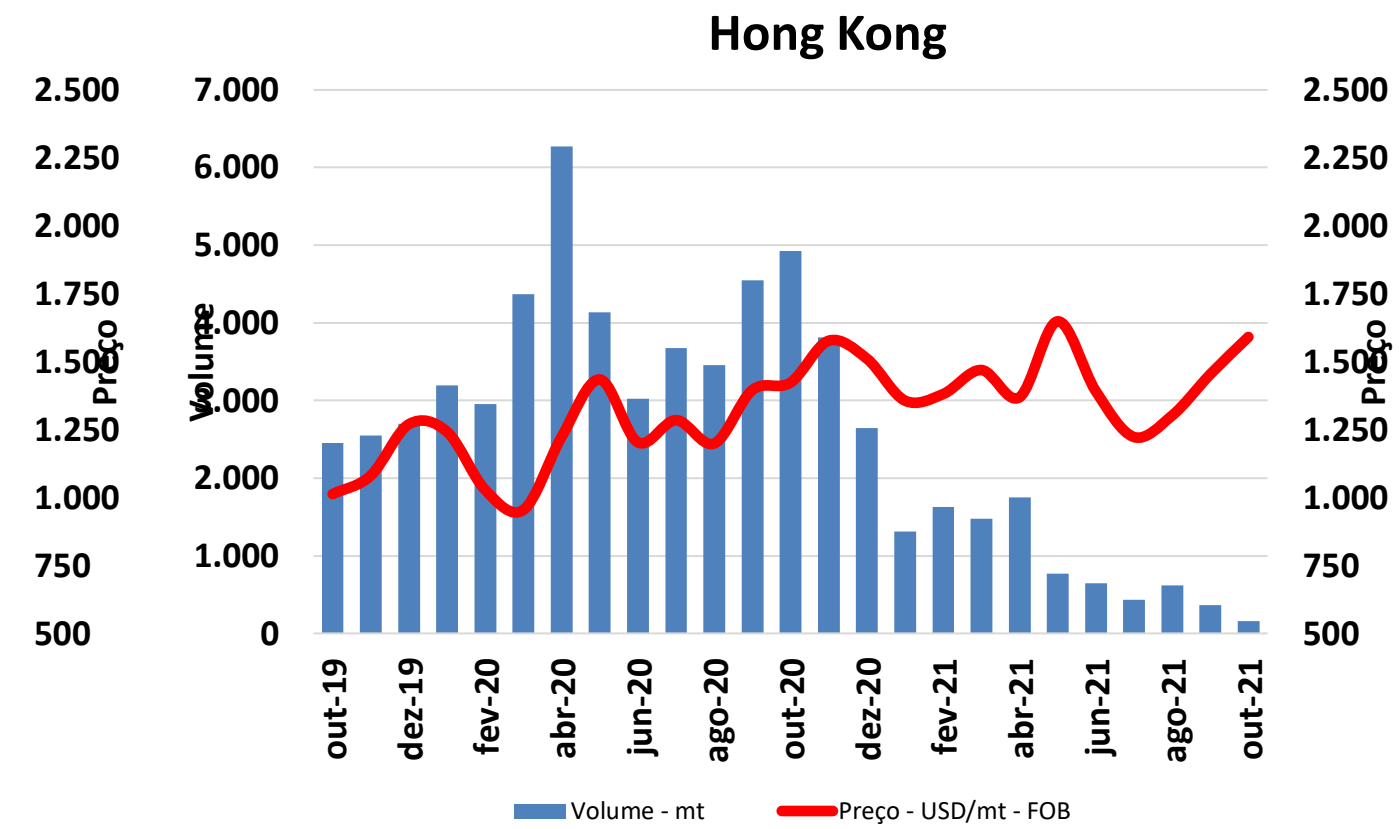
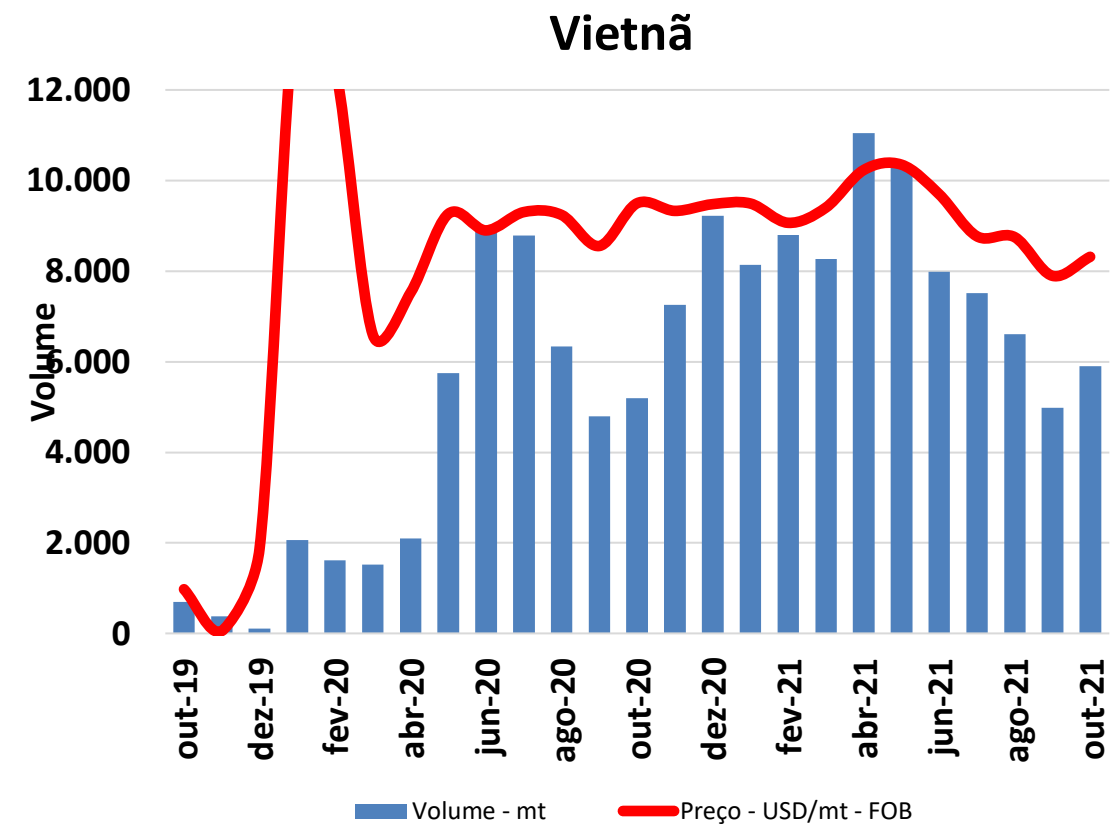
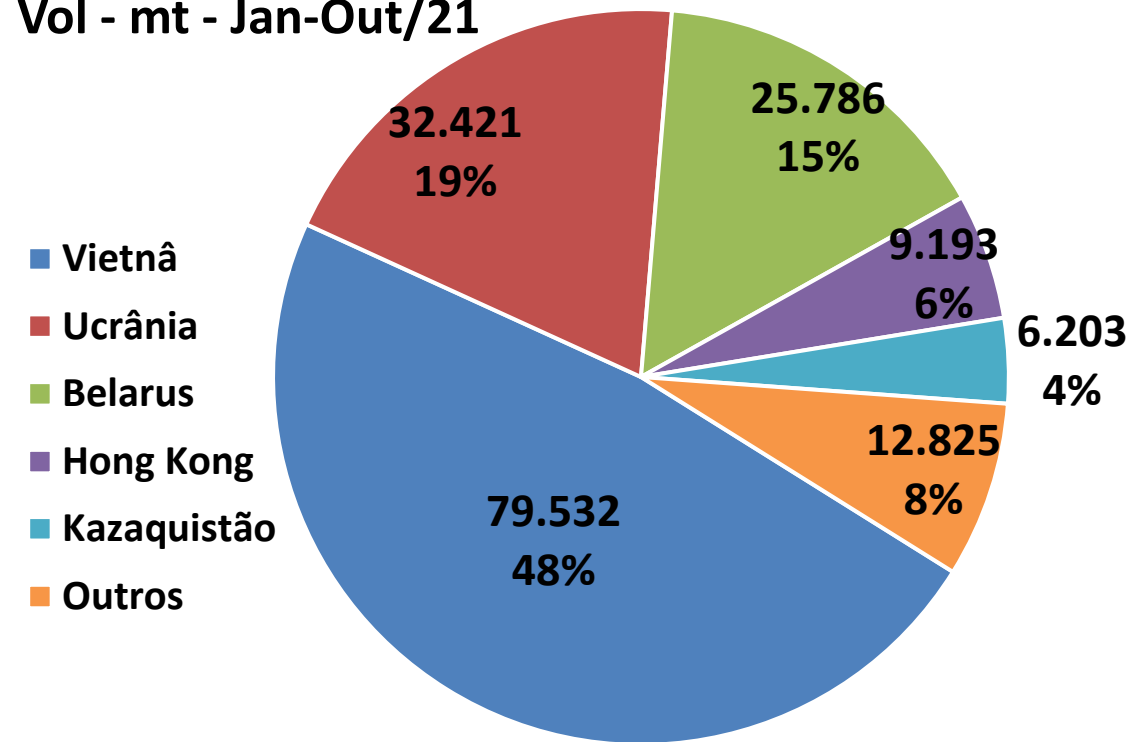
## Preço:

Com aumento de USD 24/mt em out/21, cerca de 1,1% acima do mês anterior.

No acumulado de jan-out/21 houve aumento de USD 380/mt cerca de 22% acima do mesmo período de 2020.

# RÚSSIA - DESTINOS SELECIONADOS - VOLUME E PREÇO

Destinos Selecionados  
Vol - mt - Jan-Out/21







ASSOCIAÇÃO  
BRASILEIRA  
DE PROTEÍNA  
ANIMAL

<http://abpa-br.com.br/>

[abpa@abpa-br.org](mailto:abpa@abpa-br.org)

**Siga a ABPA nas redes sociais!**



[instagram.com/abpabr](https://www.instagram.com/abpabr)



[twitter.com/abpabr](https://twitter.com/abpabr)



[fb.com/abpabr](https://www.facebook.com/abpabr)



[linkedin.com/company/abpa](https://www.linkedin.com/company/abpa)